

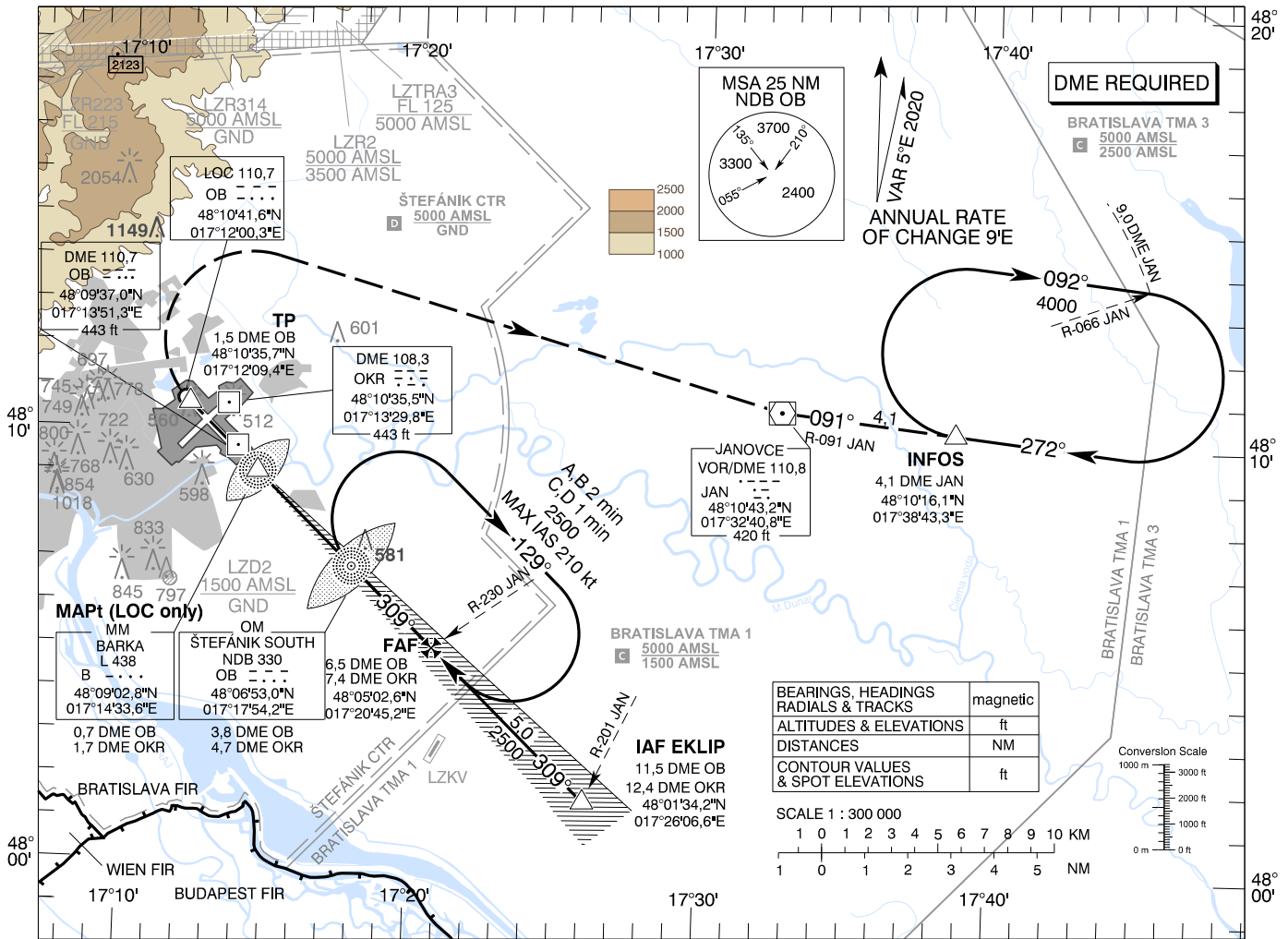
**INSTRUMENT
APPROACH
CHART - ICAO**

TRANSITION ALTITUDE
10 000 ft

AD ELEV 436 -16 hPa
THR RWY 31 ELEV 433,7 -16 hPa

ŠTEFÁNIK RADAR 134,925 (118,975)
ŠTEFÁNIK TOWER 118,300 (118,700)
ŠTEFÁNIK ATIS ARRIVAL 133,880

**BRATISLAVA/M. R. Štefánik (LZIB)
ILS CAT I&II&III or LOC RWY 31
ACFT CAT A/B/C/D**

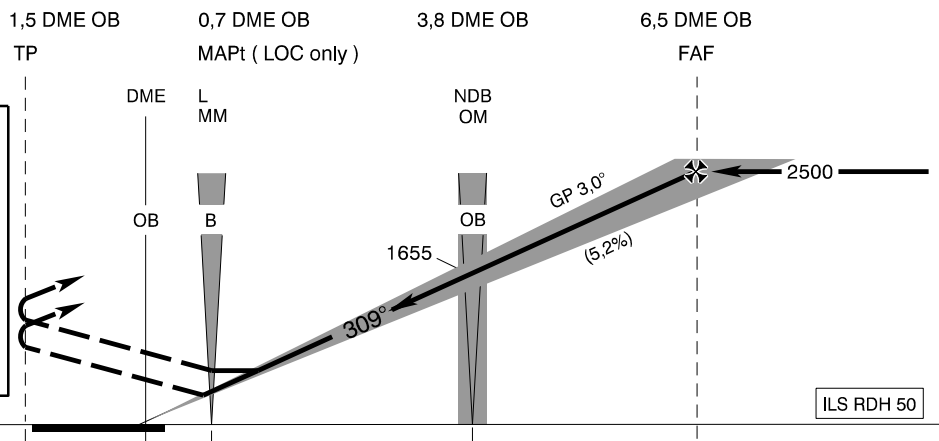


MISSED APPROACH

Climb to TP (1,5 DME OB),
turn RIGHT to VOR JAN, intercept R-091
VOR JAN (track 091°) to join the holding
at INFOS (R-091 VOR JAN /
4,1 DME JAN) climbing to 4000 AMSL.
MAX IAS 185 kt until
established on track to VOR JAN.

**ALTERNATE MISSED APPROACH
IN CASE OF DME OB UNSERVICEABLE**

LOC | **ILS CAT I&II&III**
At MAPt... | Climb straight ahead,
at 800 AMSL...
...turn RIGHT to VOR JAN,
intercept R-091 VOR JAN (track 091°)
to join the holding at INFOS
(R-091 VOR JAN / 4,1 DME JAN)
climbing to 4000 AMSL.
MAX IAS 185 kt until
established on track to VOR JAN.
No turn before MM (L B)



THR RWY 31 ELEV 433,7 - 16 hPa
NM to/from THR RWY 31

OCA (OCH)		ASC	A	B	C	D
Straight-in Approach	CAT III A	2,5% ft	approved			
		4,0% ft	approved			
	CAT II	2,5% ft	645 (211)	662 (228)	674 (240)	688 (254)
		4,0% ft	508 (74)	525 (91)	537 (103)	551 (117)
	CAT I	2,5% ft	750 (316)	762 (328)	770 (336)	781 (347)
		4,0% ft	601 (167)	613 (179)	621 (187)	632 (198)
LOC	2,5% ft	830 (394)				
Circling	Not authorized WEST of the Airport BTN EXT D RCL 13/31 and 04/22 See the Circling Approach Chart					

DME OB	NM	6,0	5,0	4,0	3,0	2,0
ALTITUDES	ft	2340	2021	1703	1384	1066

Ground speed	kt	70	90	100	120	140	160	180
FAF - MAPt (5,8 NM)	min:sec	4:57	3:51	3:28	2:53	2:28	2:10	1:55
Rate of descent (5,2%)	ft/min	372	478	531	637	743	849	955

Timing not authorized for defining the MAPt

CHANGES: new OBST ELEV 1018 added