

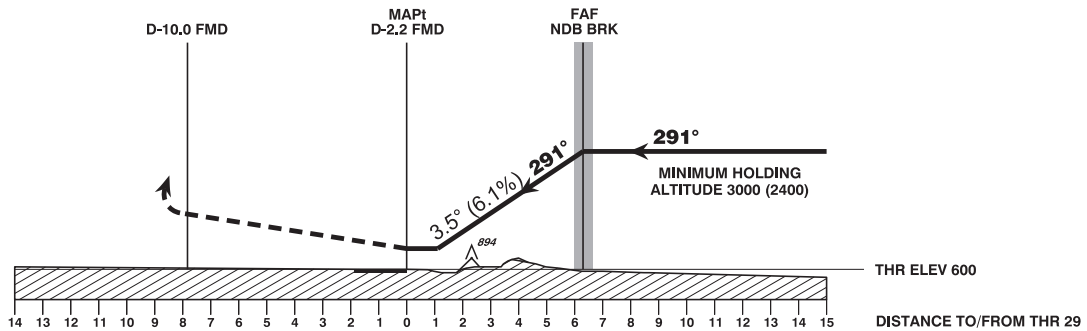
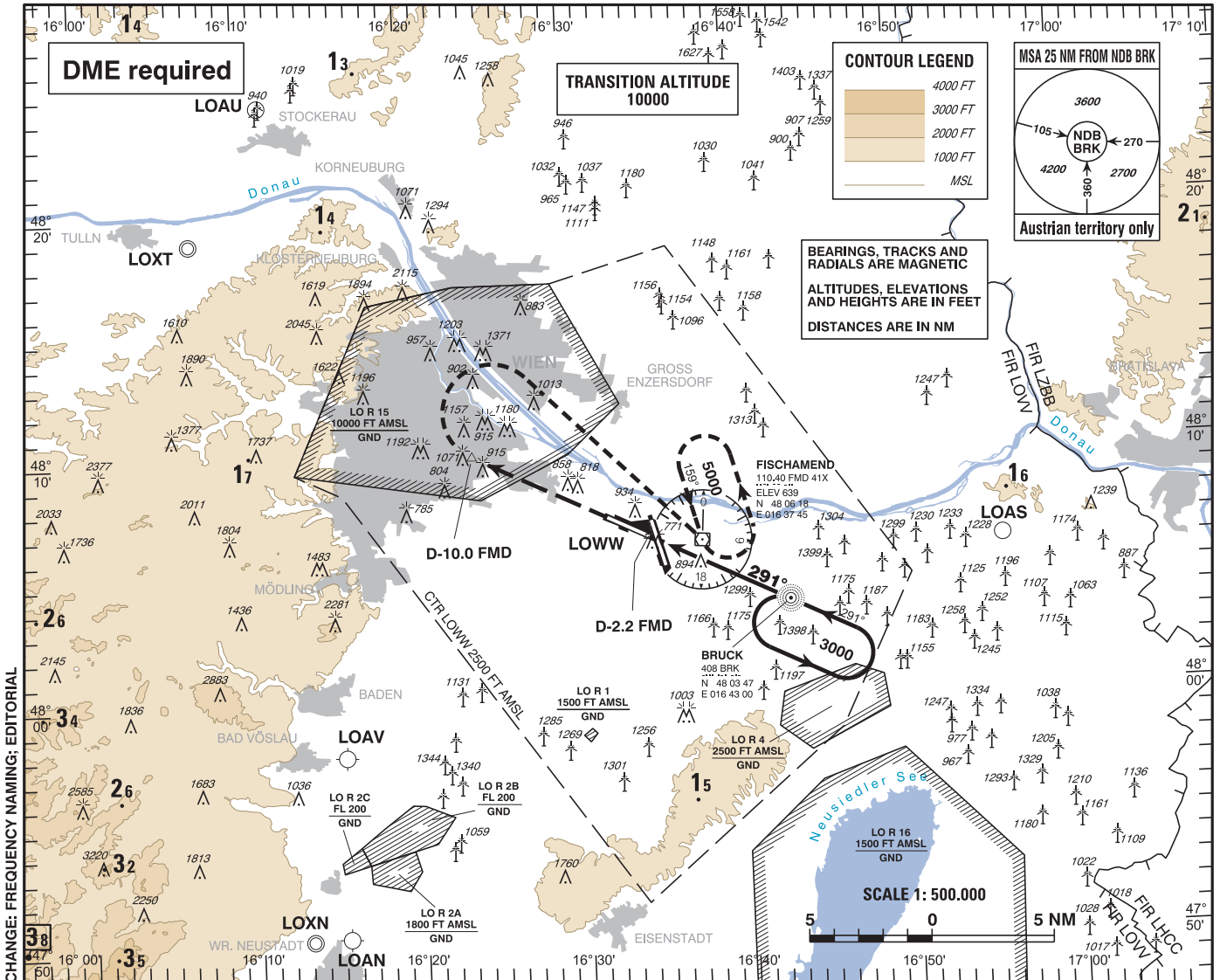
INSTRUMENT APPROACH CHART - ICAO

VAR 5° E

AD ELEV 600 FT
THR 29 ELEV 600 FT
HGT RELATED TO AD ELEV

RADAR	118.775	125.175	129.050	134.675	136.250
ARRIVAL	119.800	134.125			
TOWER	119.400	123.800	124.475		
GROUND	121.600	121.775			
ATIS	122.955				

WIEN-SCHWECHAT ÖSTERREICH AUSTRIA NDB RWY 29



MISSED APPROACH: CLIMB STRAIGHT AHEAD, AT D-10.0 FMD TURN RIGHT TO FMD; CLIMB TO 5000 FT AMSL AND HOLD.

OCA (OCH) IN FT	A	B	C	D
STRAIGHT-IN APPROACH	1460 (860)			

NDB BRK TO THR 29 - DISTANCE 6.3 NM							
	GS (KT)	80	100	120	140	160	180
NDB BRK - THR 29	MIN : SEC	4:44	3:47	3:09	2:42	2:22	2:06
Rate of descent (6.1%)	FT / MIN	500	620	750	870	990	1120