

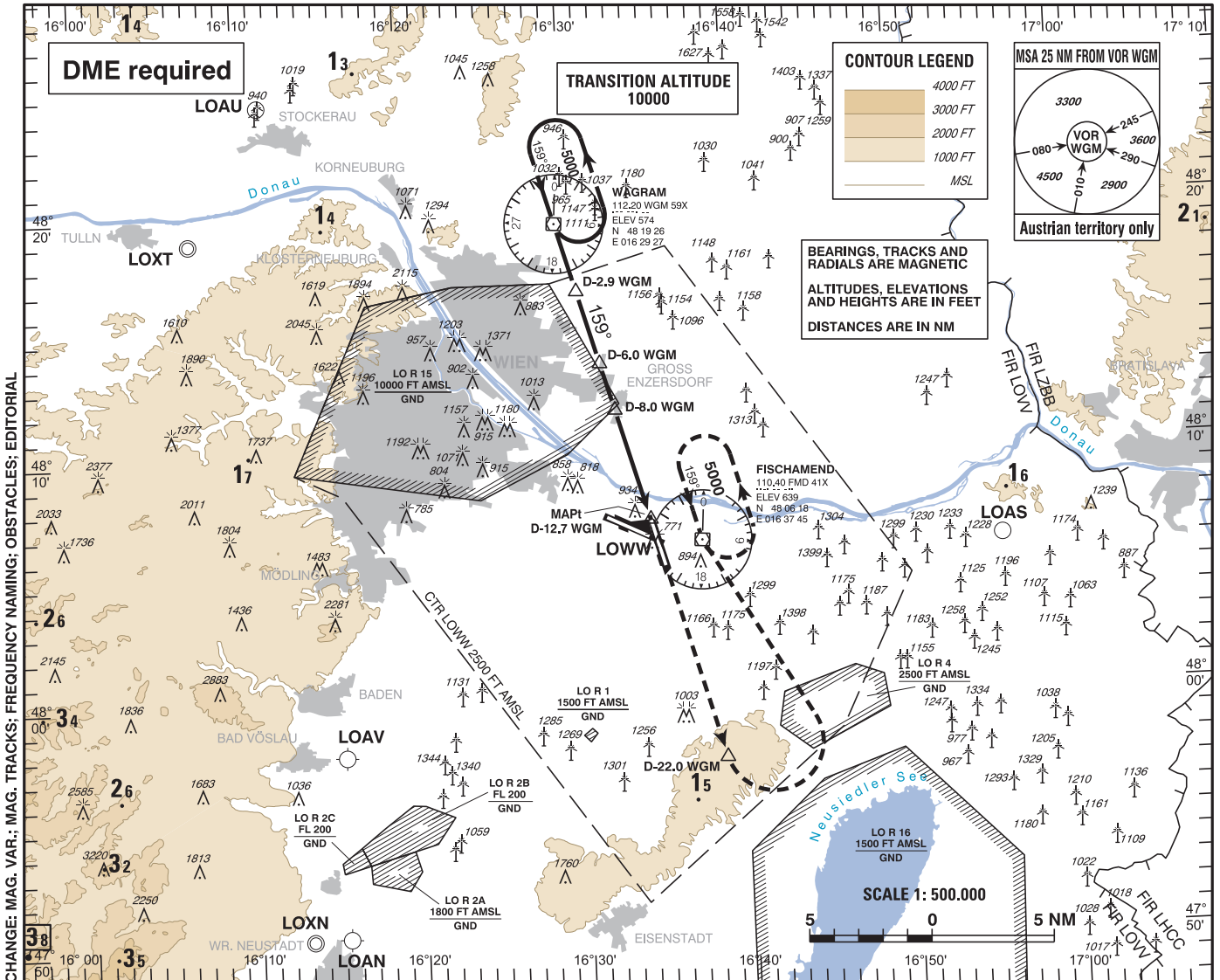
**INSTRUMENT APPROACH CHART - ICAO**

VAR 5° E

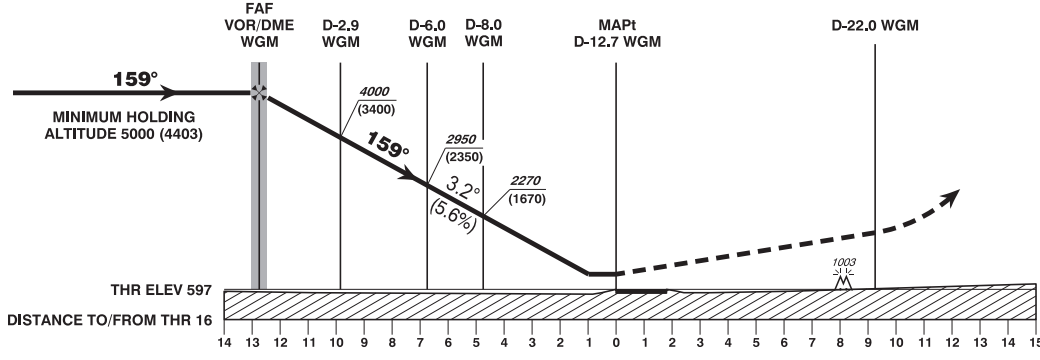
AD ELEV 600 FT  
THR 16 ELEV 597 FT  
HGT RELATED TO AD ELEV

RADAR	118.775	125.175	129.050	134.675	136.250
ARRIVAL	119.800	134.125			
TOWER	119.400	123.800	124.475		
GROUND	121.600	121.775			
ATIS	122.955				

**WIEN-SCHWECHAT**  
ÖSTERREICH AUSTRIA  
VOR RWY 16



CHANGE: MAG. VAR.; MAG. TRACKS; FREQUENCY NAMING; OBSTACLES; EDITORIAL



**MISSED APPROACH:** CLIMB STRAIGHT AHEAD, AT D-22.0 WGM TURN LEFT TO FMD; CLIMB TO 5000 FT AMSL AND HOLD.

OCA (OCH) IN FT		A	B	C	D
STRAIGHT-IN APPROACH	VOR/DME	1200 (600)			

VOR/DME WGM to THR 16 - DISTANCE 12.7 NM							
(Timing not authorized for defining the MAPt)							
	GS (KT)	80	100	120	140	160	180
VOR/DME WGM - THR 16	MIN : SEC	9:32	7:37	6:21	5:27	4:46	4:14
Rate of descent (5.6%)	FT / MIN	460	570	690	800	910	1030

DME WGM	1	2	3	4	5	6	7	8	9	10	11
DIST THR	11.7	10.7	9.7	8.7	7.7	6.7	5.7	4.7	3.7	2.7	1.7
ALT (HEIGHT)	4660 (4063)	4320 (3723)	3980 (3383)	3630 (3033)	3290 (2693)	2950 (2353)	2610 (2013)	2270 (1673)	1930 (1333)	1580 (983)	1240 (643)