

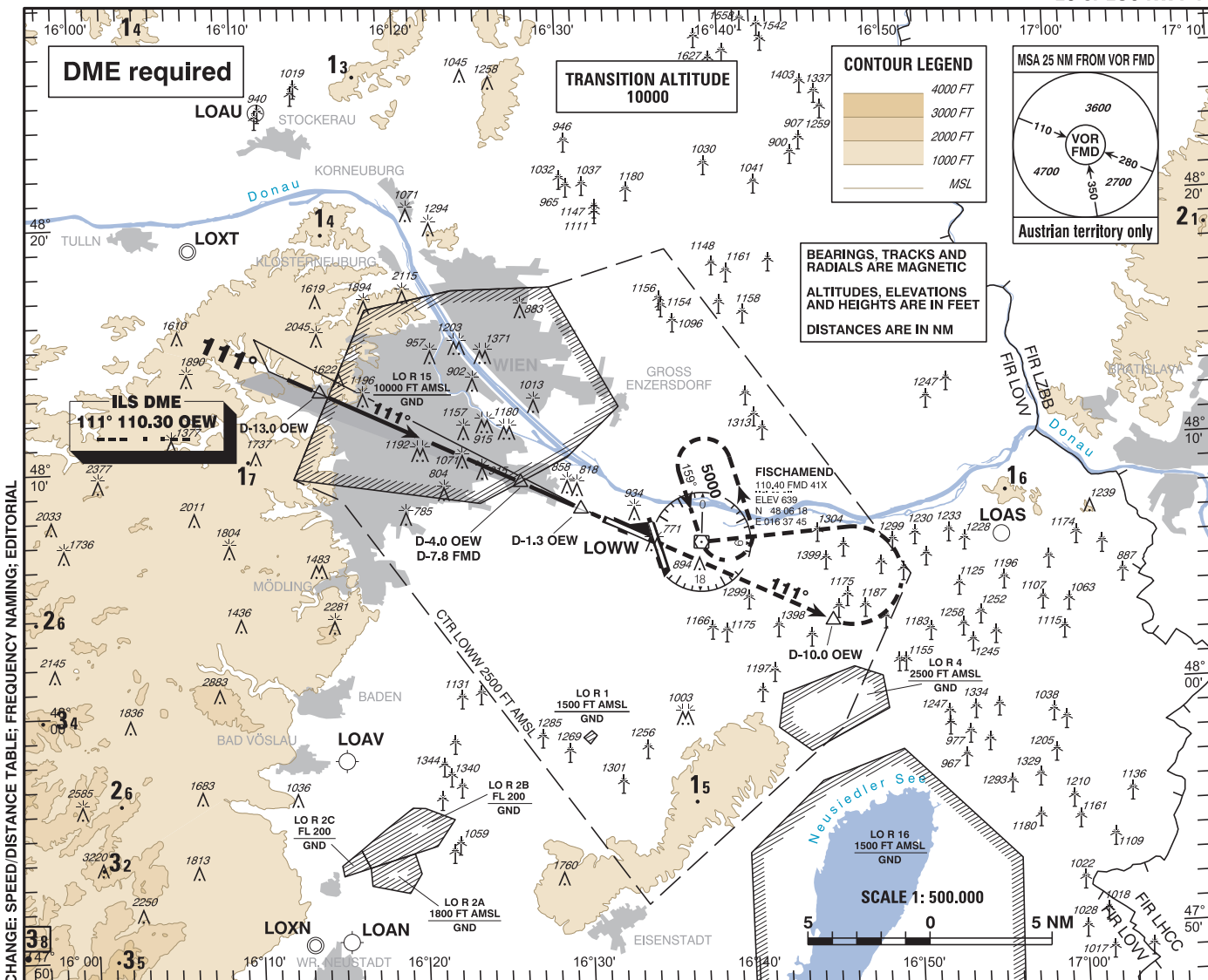
**INSTRUMENT APPROACH CHART - ICAO**

VAR 5° E

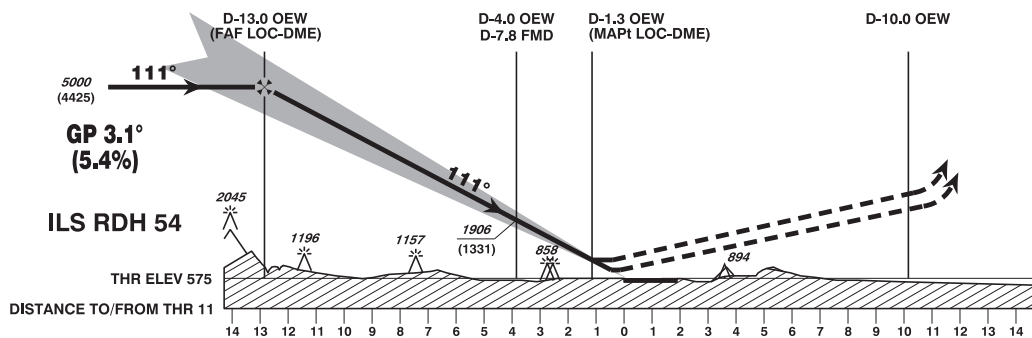
AD ELEV 600 FT  
THR 11 ELEV 575 FT  
HGT RELATED TO THR ELEV

RADAR	118.775	125.175	129.050	134.675	136.250
ARRIVAL	119.800	134.125			
TOWER	119.400	123.800	124.475		
GROUND	121.600	121.775			
ATIS	122.955				

**WIEN-SCHWECHAT ÖSTERREICH AUSTRIA ILS or LOC RWY 11**



CHANGE: SPEED/DISTANCE TABLE; FREQUENCY NAMING; EDITORIAL



**MISSED APPROACH:** CLIMB STRAIGHT AHEAD, AT D-10.0 OEW TURN LEFT TO FMD; CLIMB TO 5000 FT AMSL AND HOLD.

OCA (OCH) IN FT		A	B	C	D / D <sub>L</sub>
STRAIGHT-IN APPROACH	CAT I Press. Altim.	719 (144)	731 (156)	739 (164)	750 (175)
	LOC-DME	1200 (630)			

D-13.0 OEW to THR 11 - DISTANCE 12.8 NM (Timing not authorized for defining the MAPt)						
GS (KT)	80	100	120	140	160	180
D-13.0 OEW - THR 11 MIN : SEC	9:36	7:41	6:24	5:29	4:48	4:16
Rate of descent (5.4%) FT / MIN	440	550	660	770	870	980

DME OEW	12	11	10	9	8	7	6	5	4	3	2
DIST THR	11.8	10.8	9.8	8.8	7.8	6.8	5.8	4.8	3.8	2.8	1.8
ALT (HEIGHT)	4650 (4075)	4300 (3725)	3950 (3375)	3610 (3035)	3260 (2685)	2920 (2345)	2580 (2005)	2240 (1665)	1900 (1325)	1570 (995)	1240 (665)