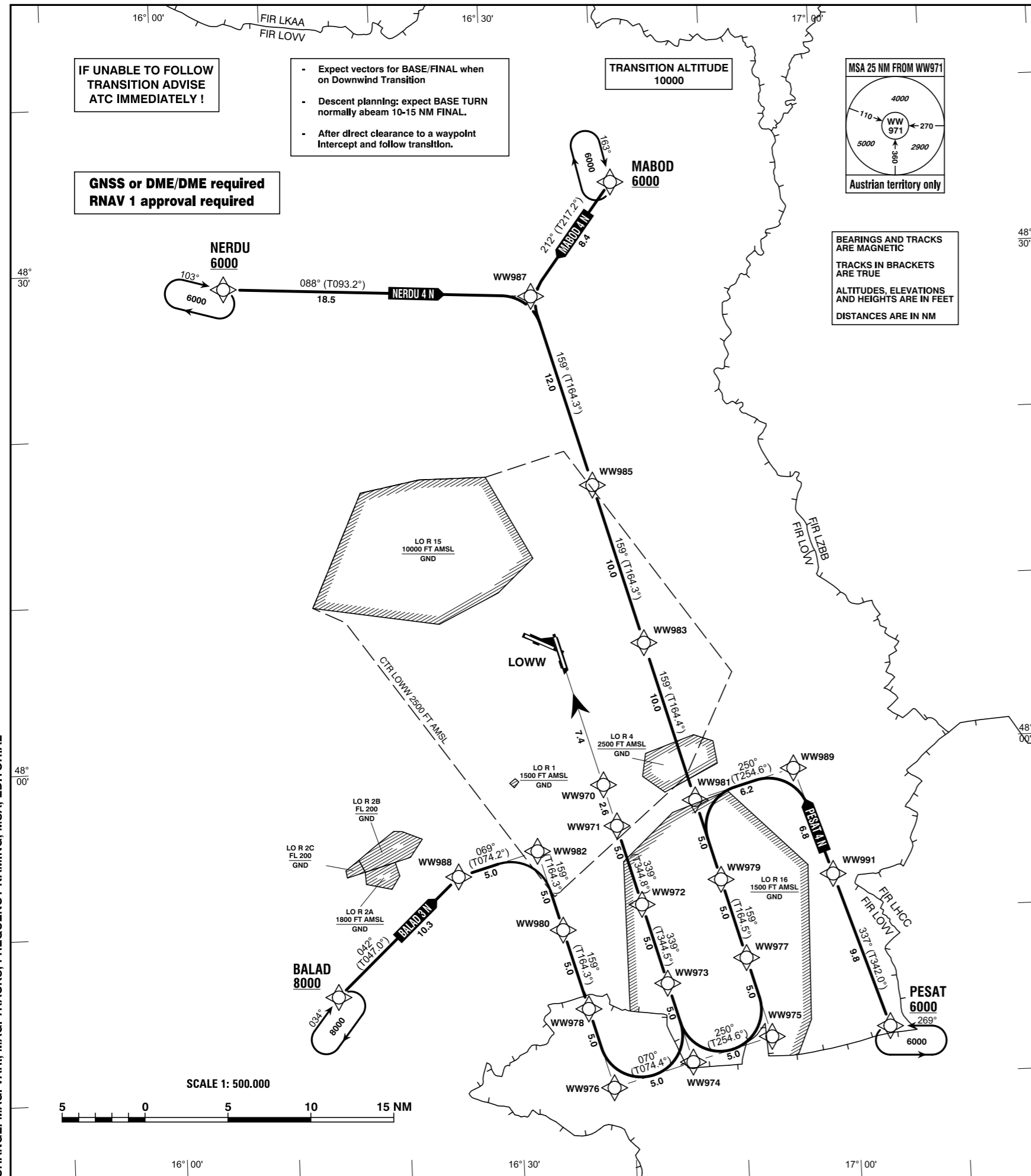


RNAV
ARRIVAL CHART
TRANSITION TO FINAL APCH RWY 34

WIEN-SCHWECHAT
ÖSTERREICH AUSTRIA
RWY 34

RADAR	118.775	125.175	129.050	134.675	136.250
ARRIVAL	119.800	134.125			
TOWER	119.400	123.800	124.475		
GROUND	121.600	121.775			
ATIS	122.955				

VAR 5° E

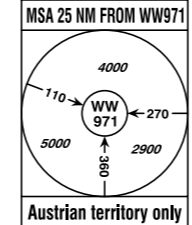


IF UNABLE TO FOLLOW
TRANSITION ADVISE
ATC IMMEDIATELY !

- Expect vectors for BASE/FINAL when on Downwind Transition
- Descent planning: expect BASE TURN normally abeam 10-15 NM FINAL.
- After direct clearance to a waypoint Intercept and follow transition.

GNSS or DME/DME required
RNAV 1 approval required

TRANSITION ALTITUDE
10000



BEARINGS AND TRACKS
ARE MAGNETIC
TRACKS IN BRACKETS
ARE TRUE
ALTITUDES, ELEVATIONS
AND HEIGHTS ARE IN FEET
DISTANCES ARE IN NM

Intentionally left blank

CHANGE: MAG. VAR.; MAG. TRACKS; FREQUENCY NAMING; MSA; EDITORIAL

Designator	Route						Remarks			
BALAD 3 N Balad three november transition	BALAD - WW988 - WW982 - WW980 - WW978 - WW976 - WW974 - WW973 - WW972 - WW971									
RNAV Transition Coding Table of BALAD 3 N										
Path Terminator	Waypoint			Course/ Track ° MAG (° True)	DIST NM	Turn Direction	Constraints		Navigation Specification	Remarks
	Identifier	Flyover	Coordinates				Level	Speed		
IF	BALAD	no	N474600.21 E0161402.56				A8000+		RNAV 1	
TF	WW988	no	N475259.15 E0162510.61	042° (047.0°)	10.3		A6000+		RNAV 1	
TF	WW982	no	N475420.48 E0163219.84	069° (074.2°)	5.0	right	A6000+		RNAV 1	
TF	WW980	no	N474931.73 E0163420.29	159° (164.3°)	5.0	right	A6000+		RNAV 1	
TF	WW978	no	N474442.93 E0163620.37	159° (164.3°)	5.0		A6000+		RNAV 1	
TF	WW976	no	N473954.06 E0163820.04	159° (164.4°)	5.0		A6000+		RNAV 1	
TF	WW974	no	N474114.66 E0164527.78	070° (074.4°)	5.0	left	A6000+		RNAV 1	
TF	WW973	no	N474603.63 E0164328.71	339° (344.5°)	5.0	left	A4000+		RNAV 1	
TF	WW972	no	N475052.53 E0164129.29	339° (344.5°)	5.0		A4000+		RNAV 1	
TF	WW971	no	N475540.56 E0163932.50	339° (344.8°)	5.0		A3000+		RNAV 1	

Designator	Route							Remarks		
MABOD 4 N Mabod four november transition	MABOD - WW987 - WW985 - WW983 - WW981 - WW979 - WW977 - WW975 - WW974 - WW973 - WW972 - WW971									
RNAV Transition Coding Table of MABOD 4 N										
Path Terminator	Waypoint			Course/ Track ° MAG (° True)	DIST NM	Turn Direction	Constraints		Navigation Specification	Remarks
	Identifier	Flyover	Coordinates				Level	Speed		
IF	MABOD	no	N483428.41 E0164124.35				A6000+		RNAV 1	
TF	WW987	no	N482747.10 E0163346.60	212° (217.2°)	8.4		A6000+		RNAV 1	
TF	WW985	no	N481615.72 E0163838.30	159° (164.3°)	12.0	left	A6000+		RNAV 1	
TF	WW983	no	N480638.15 E0164240.10	159° (164.3°)	10.0		A6000+		RNAV 1	
TF	WW981	no	N475701.81 E0164639.46	159° (164.4°)	10.0		A6000+		RNAV 1	
TF	WW979	no	N475212.81 E0164838.67	159° (164.5°)	5.0		A6000+		RNAV 1	
TF	WW977	no	N474723.75 E0165037.51	159° (164.5°)	5.0		A6000+		RNAV 1	
TF	WW975	no	N474234.67 E0165236.02	159° (164.5°)	5.0		A6000+		RNAV 1	
TF	WW974	no	N474114.66 E0164527.78	250° (254.6°)	5.0	right	A6000+		RNAV 1	
TF	WW973	no	N474603.63 E0164328.71	339° (344.5°)	5.0	right	A4000+		RNAV 1	
TF	WW972	no	N475052.53 E0164129.29	339° (344.5°)	5.0		A4000+		RNAV 1	
TF	WW971	no	N475540.56 E0163932.50	339° (344.8°)	5.0		A3000+		RNAV 1	

Designator	Route						Remarks			
NERDU 4 N Nerdu four november transition	NERDU - WW987 - WW985 - WW983 - WW981 - WW979 - WW977 - WW975 - WW974 - WW973 - WW972 - WW971									
RNAV Transition Coding Table of NERDU 4 N										
Path Terminator	Waypoint			Course/ Track ° MAG (° True)	DIST NM	Turn Direction	Constraints		Navigation Specification	Remarks
	Identifier	Flyover	Coordinates				Level	Speed		
IF	NERDU	no	N482853.39 E0160557.34				A6000+		RNAV 1	
TF	WW987	no	N482747.10 E0163346.60	088° (093.2°)	18.5		A6000+		RNAV 1	
TF	WW985	no	N481615.72 E0163838.30	159° (164.3°)	12.0	right	A6000+		RNAV 1	
TF	WW983	no	N480638.15 E0164240.10	159° (164.3°)	10.0		A6000+		RNAV 1	
TF	WW981	no	N475701.81 E0164639.46	159° (164.4°)	10.0		A6000+		RNAV 1	
TF	WW979	no	N475212.81 E0164838.67	159° (164.5°)	5.0		A6000+		RNAV 1	
TF	WW977	no	N474723.75 E0165037.51	159° (164.5°)	5.0		A6000+		RNAV 1	
TF	WW975	no	N474234.67 E0165236.02	159° (164.5°)	5.0		A6000+		RNAV 1	
TF	WW974	no	N474114.66 E0164527.78	250° (254.6°)	5.0	right	A6000+		RNAV 1	
TF	WW973	no	N474603.63 E0164328.71	339° (344.5°)	5.0	right	A4000+		RNAV 1	
TF	WW972	no	N475052.53 E0164129.29	339° (344.5°)	5.0		A4000+		RNAV 1	
TF	WW971	no	N475540.56 E0163932.50	339° (344.8°)	5.0		A3000+		RNAV 1	

Designator	Route							Remarks		
PESAT 4 N Pesat four november transition	PESAT - WW991 - WW989 - WW981 - WW979 - WW977 - WW975 - WW974 - WW973 - WW972 - WW971									
RNAV Transition Coding Table of PESAT 4 N										
Path Terminator	Waypoint			Course/ Track ° MAG (° True)	DIST NM	Turn Direction	Constraints		Navigation Specification	Remarks
	Identifier	Flyover	Coordinates				Level	Speed		
IF	PESAT	no	N474253.75 E0170311.37				A6000+		RNAV 1	
TF	WW991	no	N475213.30 E0165842.74	337° (342.0°)	9.8		A6000+		RNAV 1	
TF	WW989	no	N475841.50 E0165535.34	337° (342.0°)	6.8		A6000+		RNAV 1	
TF	WW981	no	N475701.81 E0164639.46	250° (254.6°)	6.2	left	A6000+		RNAV 1	
TF	WW979	no	N475212.81 E0164838.67	159° (164.5°)	5.0	left	A6000+		RNAV 1	
TF	WW977	no	N474723.75 E0165037.51	159° (164.5°)	5.0		A6000+		RNAV 1	
TF	WW975	no	N474234.67 E0165236.02	159° (164.5°)	5.0		A6000+		RNAV 1	
TF	WW974	no	N474114.66 E0164527.78	250° (254.6°)	5.0	right	A6000+		RNAV 1	
TF	WW973	no	N474603.63 E0164328.71	339° (344.5°)	5.0	right	A4000+		RNAV 1	
TF	WW972	no	N475052.53 E0164129.29	339° (344.5°)	5.0		A4000+		RNAV 1	
TF	WW971	no	N475540.56 E0163932.50	339° (344.8°)	5.0		A3000+		RNAV 1	

RNAV Holding								
Holding Point	Inbound Track ° True	Inbound Track ° MAG	Turn Direction	MAX IAS	Minimum Holding Altitude FT MSL / FL	Time	DIST NM	Remarks
BALAD	038.6°	034°	right		A8000	1 MIN		
MABOD	167.7°	163°	right		A6000	1 MIN		
NERDU	107.6°	103°	right		A6000	1 MIN		
PESAT	273.9°	269°	left		A6000	1 MIN		