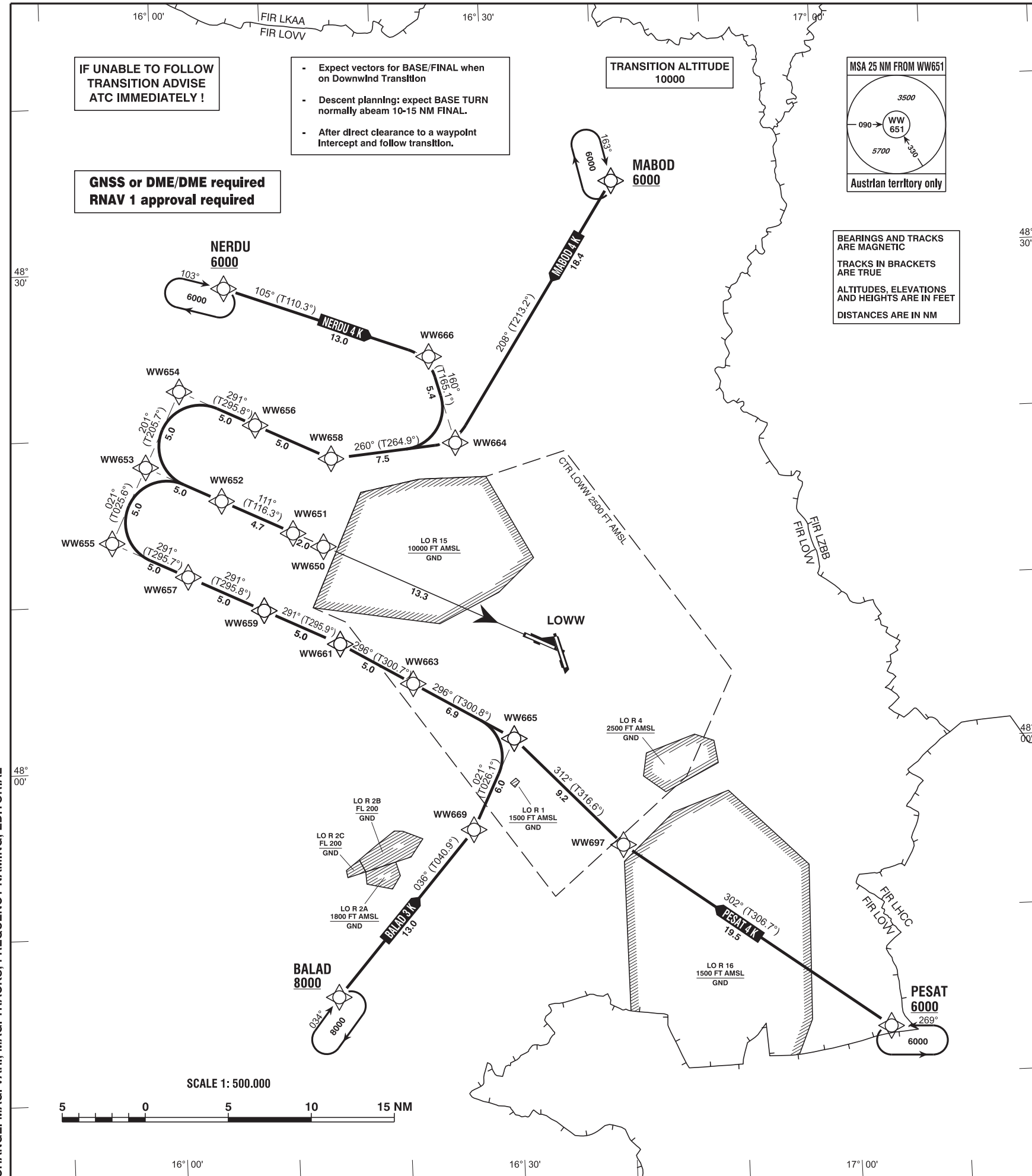


RNAV
ARRIVAL CHART
TRANSITION TO FINAL APCH RWY 11

VAR 5° E

| | | | | | |
|---------|---------|---------|---------|---------|---------|
| RADAR | 118.775 | 125.175 | 129.050 | 134.675 | 136.250 |
| ARRIVAL | 119.800 | 134.125 | | | |
| TOWER | 119.400 | 123.800 | 124.475 | | |
| GROUND | 121.600 | 121.775 | | | |
| ATIS | 122.955 | | | | |

WIEN-SCHWECHAT
ÖSTERREICH AUSTRIA
RWY 11

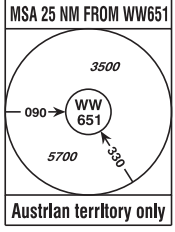


IF UNABLE TO FOLLOW
TRANSITION ADVISE
ATC IMMEDIATELY !

- Expect vectors for BASE/FINAL when on Downwind Transition
- Descent planning: expect BASE TURN normally abeam 10-15 NM FINAL.
- After direct clearance to a waypoint Intercept and follow transition.

GNSS or DME/DME required
RNAV 1 approval required

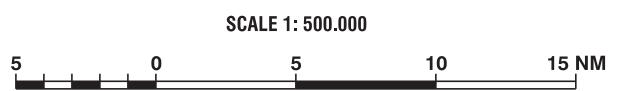
TRANSITION ALTITUDE
10000



BEARINGS AND TRACKS
ARE MAGNETIC
TRACKS IN BRACKETS
ARE TRUE
ALTITUDES, ELEVATIONS
AND HEIGHTS ARE IN FEET
DISTANCES ARE IN NM

Intentionally left blank

CHANGE: MAG. VAR.; MAG. TRACKS; FREQUENCY NAMING; EDITORIAL



| Designator | Route | | | | | | | Remarks | | |
|---|---|---------|---------------------------|---------------------------------------|------------|-------------------|-------------|---------|-----------------------------|---------|
| BALAD 3 K Balad three kilo transition | BALAD - WW669 - WW665 - WW663 - WW661 - WW659 - WW657 - WW655 - WW653 - WW652 - WW651 | | | | | | | | | |
| RNAV Transition Coding Table of BALAD 3 K | | | | | | | | | | |
| Path Terminator | Waypoint | | | Course/ Track ° MAG (° True) | DIST NM | Turn Direction | Constraints | | Navigation Specification | Remarks |
| | Identifier | Flyover | Coordinates | | | | Level | Speed | | |
| IF | BALAD | no | N474600.21 E0161402.56 | | | | A8000+ | | RNAV 1 | |
| TF | WW669 | no | N475546.40 E0162639.74 | 036° (040.9°) | 13.0 | | A5000+ | | RNAV 1 | |
| TF | WW665 | no | N480109.57 E0163035.57 | 021° (026.1°) | 6.0 | left | A5000+ | | RNAV 1 | |
| TF | WW663 | no | N480442.08 E0162143.48 | 296° (300.8°) | 6.9 | left | A5000+ | | RNAV 1 | |
| TF | WW661 | no | N480715.12 E0161518.46 | 296° (300.7°) | 5.0 | | A5000+ | | RNAV 1 | |
| TF | WW659 | no | N480925.86 E0160835.23 | 291° (295.9°) | 5.0 | left | A5000+ | | RNAV 1 | |
| TF | WW657 | no | N481136.21 E0160151.44 | 291° (295.8°) | 5.0 | | A5000+ | | RNAV 1 | |
| TF | WW655 | no | N481346.17 E0155507.08 | 291° (295.7°) | 5.0 | | A5000+ | | RNAV 1 | |
| TF | WW653 | no | N481816.47 E0155821.58 | 021° (025.6°) | 5.0 | right | A5000+ | | RNAV 1 | |
| TF | WW652 | no | N481606.33 E0160506.38 | 111° (115.7°) | 5.0 | right | A5000+ | | RNAV 1 | |
| TF | WW651 | no | N481401.04 E0161125.92 | 111° (116.3°) | 4.7 | | A5000+ | | RNAV 1 | |

| Designator | Route | Remarks |
|--|---|---------|
| MABOD 4 K Mabod four kilo transition | MABOD - WW664 - WW658 - WW656 - WW654 - WW653 - WW652 - WW651 | |

RNAV Transition Coding Table of MABOD 4 K

| Path Terminator | Waypoint | | | Course/ Track ° MAG (° True) | DIST NM | Turn Direction | Constraints | | Navigation Specification | Remarks |
|-----------------|------------|---------|---------------------------|---------------------------------------|------------|-------------------|-------------|-------|-----------------------------|---------|
| | Identifier | Flyover | Coordinates | | | | Level | Speed | | |
| IF | MABOD | no | N483428.41 E0164124.35 | | | | A6000+ | | RNAV 1 | |
| TF | WW664 | no | N481906.20 E0162621.72 | 208° (213.2°) | 18.4 | | A5000+ | | RNAV 1 | |
| TF | WW658 | no | N481825.63 E0161506.57 | 260° (264.9°) | 7.5 | right | A5000+ | | RNAV 1 | |
| TF | WW656 | no | N482036.35 E0160821.89 | 291° (295.9°) | 5.0 | right | A5000+ | | RNAV 1 | |
| TF | WW654 | no | N482246.68 E0160136.63 | 291° (295.8°) | 5.0 | | A5000+ | | RNAV 1 | |
| TF | WW653 | no | N481816.47 E0155821.58 | 201° (205.7°) | 5.0 | left | A5000+ | | RNAV 1 | |
| TF | WW652 | no | N481606.33 E0160506.38 | 111° (115.7°) | 5.0 | left | A5000+ | | RNAV 1 | |
| TF | WW651 | no | N481401.04 E0161125.92 | 111° (116.3°) | 4.7 | | A5000+ | | RNAV 1 | |

| Designator | Route | | | | | | Remarks | | | |
|--|---|---------|---------------------------|---------------------------------------|------------|-------------------|-------------|-------|-----------------------------|---------|
| NERDU 4 K Nerdu four kilo transition | NERDU - WW666 - WW664 - WW658 - WW656 - WW654 - WW653 - WW652 - WW651 | | | | | | | | | |
| RNAV Transition Coding Table of NERDU 4 K | | | | | | | | | | |
| Path Terminator | Waypoint | | | Course/ Track ° MAG (° True) | DIST NM | Turn Direction | Constraints | | Navigation Specification | Remarks |
| | Identifier | Flyover | Coordinates | | | | Level | Speed | | |
| IF | NERDU | no | N482853.39 E0160557.34 | | | | A6000+ | | RNAV 1 | |
| TF | WW666 | no | N482421.00 E0162416.00 | 105° (110.3°) | 13.0 | | A5000+ | | RNAV 1 | |
| TF | WW664 | no | N481906.20 E0162621.72 | 160° (165.1°) | 5.4 | right | A5000+ | | RNAV 1 | |
| TF | WW658 | no | N481825.63 E0161506.57 | 260° (264.9°) | 7.5 | right | A5000+ | | RNAV 1 | |
| TF | WW656 | no | N482036.35 E0160821.89 | 291° (295.9°) | 5.0 | right | A5000+ | | RNAV 1 | |
| TF | WW654 | no | N482246.68 E0160136.63 | 291° (295.8°) | 5.0 | | A5000+ | | RNAV 1 | |
| TF | WW653 | no | N481816.47 E0155821.58 | 201° (205.7°) | 5.0 | left | A5000+ | | RNAV 1 | |
| TF | WW652 | no | N481606.33 E0160506.38 | 111° (115.7°) | 5.0 | left | A5000+ | | RNAV 1 | |
| TF | WW651 | no | N481401.04 E0161125.92 | 111° (116.3°) | 4.7 | | A5000+ | | RNAV 1 | |

| Designator | Route | Remarks |
|--|---|---------|
| PESAT 4 K Pesat four kilo transition | PESAT - WW697 - WW665 - WW663 - WW661 - WW659 - WW657 - WW655 - WW653 - WW652 - WW651 | |

RNAV Transition Coding Table of PESAT 4 K

| Path Terminator | Waypoint | | | Course/ Track ° MAG (° True) | DIST NM | Turn Direction | Constraints | | Navigation Specification | Remarks |
|-----------------|------------|---------|---------------------------|---------------------------------------|------------|-------------------|-------------|-------|-----------------------------|---------|
| | Identifier | Flyover | Coordinates | | | | Level | Speed | | |
| IF | PESAT | no | N474253.75 E0170311.37 | | | | A6000+ | | RNAV 1 | |
| TF | WW697 | no | N475430.00 E0163959.00 | 302° (306.7°) | 19.5 | | A5000+ | | RNAV 1 | |
| TF | WW665 | no | N480109.57 E0163035.57 | 312° (316.6°) | 9.2 | right | A5000+ | | RNAV 1 | |
| TF | WW663 | no | N480442.08 E0162143.48 | 296° (300.8°) | 6.9 | left | A5000+ | | RNAV 1 | |
| TF | WW661 | no | N480715.12 E0161518.46 | 296° (300.7°) | 5.0 | | A5000+ | | RNAV 1 | |
| TF | WW659 | no | N480925.86 E0160835.23 | 291° (295.9°) | 5.0 | left | A5000+ | | RNAV 1 | |
| TF | WW657 | no | N481136.21 E0160151.44 | 291° (295.8°) | 5.0 | | A5000+ | | RNAV 1 | |
| TF | WW655 | no | N481346.17 E0155507.08 | 291° (295.7°) | 5.0 | | A5000+ | | RNAV 1 | |
| TF | WW653 | no | N481816.47 E0155821.58 | 021° (025.6°) | 5.0 | right | A5000+ | | RNAV 1 | |
| TF | WW652 | no | N481606.33 E0160506.38 | 111° (115.7°) | 5.0 | right | A5000+ | | RNAV 1 | |
| TF | WW651 | no | N481401.04 E0161125.92 | 111° (116.3°) | 4.7 | | A5000+ | | RNAV 1 | |

RNAV Holding

| Holding Point | Inbound Track ° True | Inbound Track ° MAG | Turn Direction | MAX IAS | Minimum Holding Altitude FT MSL / FL | Time | DIST NM | Remarks |
|---------------|-------------------------|------------------------|----------------|---------|---|-------|------------|---------|
| BALAD | 038.6° | 034° | right | | A8000 | 1 MIN | | |
| MABOD | 167.7° | 163° | right | | A6000 | 1 MIN | | |
| NERDU | 107.6° | 103° | right | | A6000 | 1 MIN | | |
| PESAT | 273.9° | 269° | left | | A6000 | 1 MIN | | |