

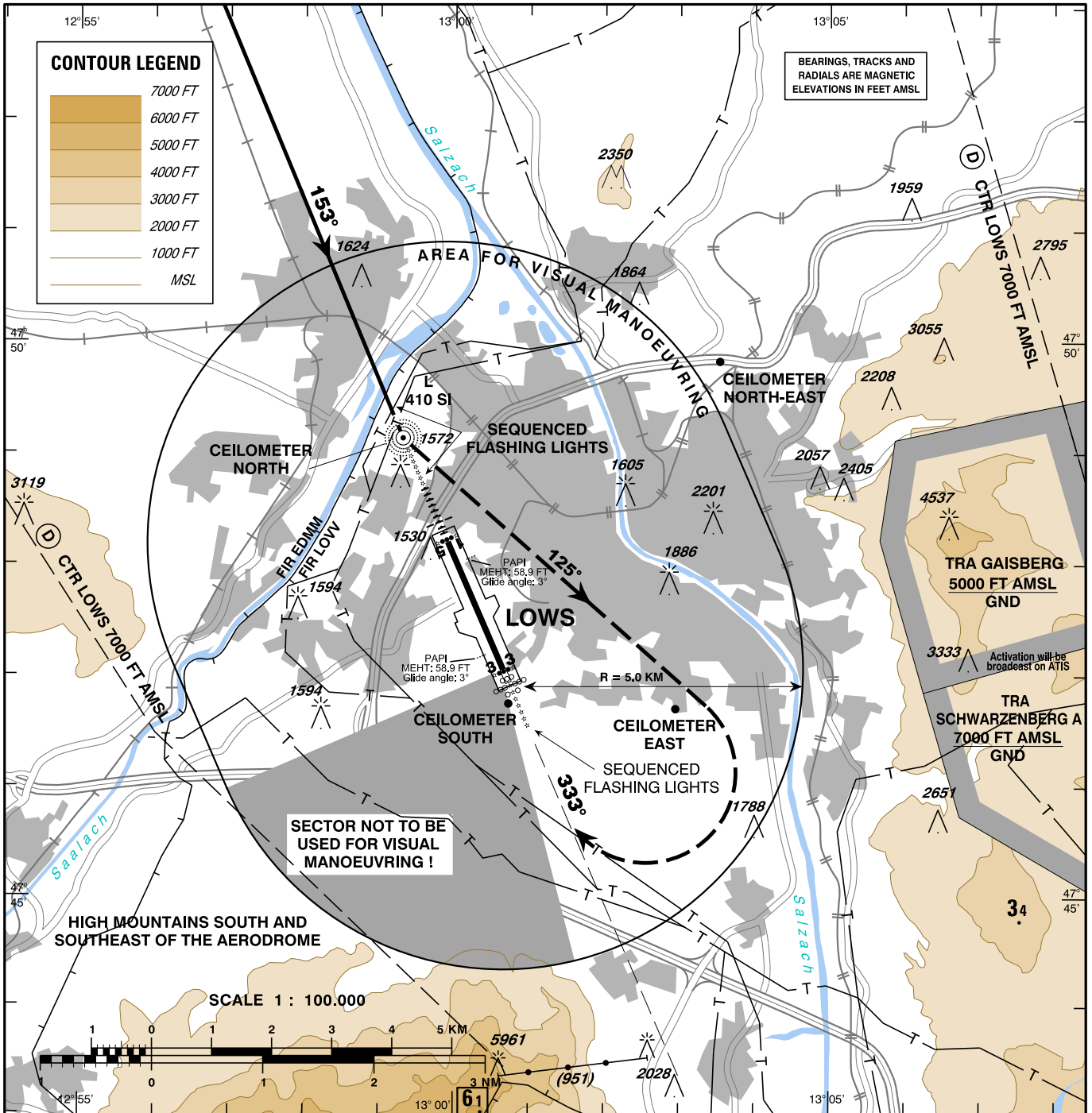
CIRCLING RWY 33

VAR 4° E

AD ELEV 1411 FT

RADAR 123.725
TOWER 132.460
ATIS 118.100
133.330

SALZBURG
ÖSTERREICH AUSTRIA



CHANGE: EDITORIAL

OCA	CIRCLING	
A/C CATEGORY	MNM REQUIRED FLIGHT VISIBILITY	
A	2450 FT AMSL	2.8 KM
B	2500 FT AMSL	
C	2600 FT AMSL	
D	2600 FT AMSL	

CIRCLING PROCEDURE RWY 33:

Complete a published instrument approach to RWY 15;
After passing L SI proceed VISUALLY approximately on track 125° 3.5 NM followed by right turn for positioning on to final RWY 33.

If visual reference is lost during the circling manoeuvre, climb to the minimum circling altitude or higher and turn right to L SI. Do not overshoot QDM 333°L SI; after L SI follow the missed approach procedure as described for the ILS RWY 15 approach.