

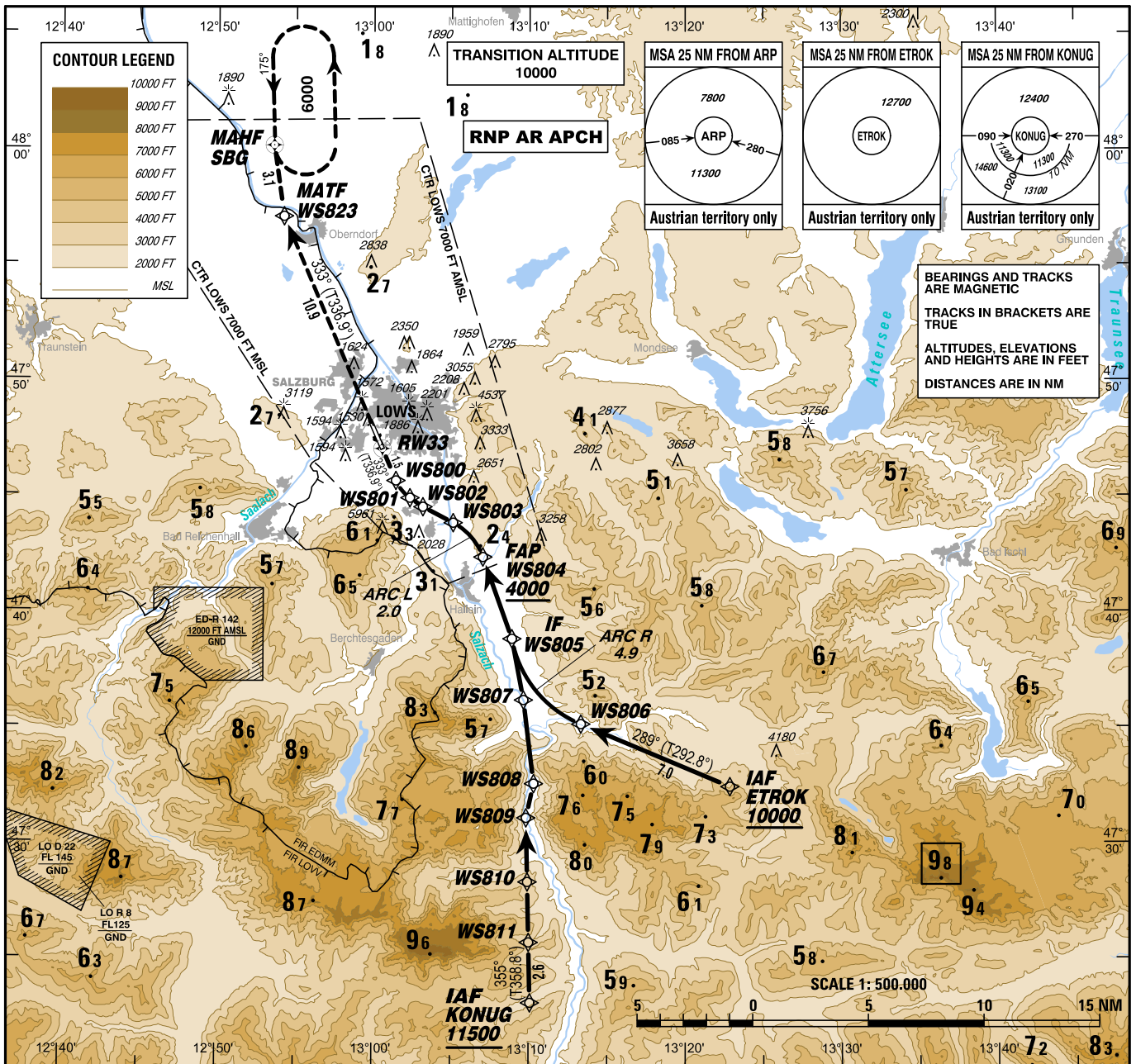
INSTRUMENT APPROACH CHART - ICAO

VAR 4° E

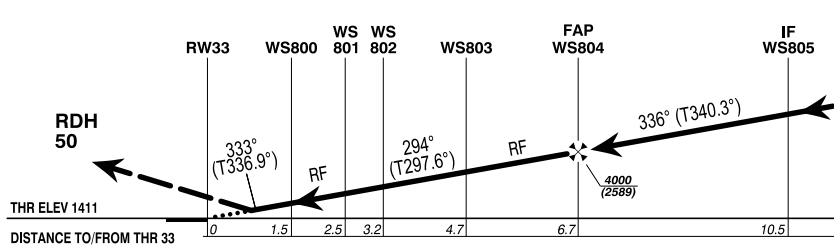
AD ELEV 1411 FT
THR 33 ELEV 1411 FT
HGT RELATED TO THR ELEV

| | |
|-------|---------|
| RADAR | 123.725 |
| TOWER | 132.460 |
| ATIS | 118.100 |
| | 133.330 |

SALZBURG
ÖSTERREICH AUSTRIA
RNP 2 RWY 33 (AR)



CHANGE: PAPI INFORMATION: MAX TEMPERATURE: EDITORIAL



SPECIAL AUTHORIZATION REQUIRED

| | | | |
|-----------------|-------------------|----------|----------|
| OCA (OCH) IN FT | A | B | C |
| RNP 0.3 | 1780 (369) | | |

| | | | | | | |
|----------|-----|-----|-----|-----|------|------|
| GS (KT) | 80 | 100 | 120 | 140 | 160 | 180 |
| FT / MIN | 510 | 640 | 770 | 890 | 1020 | 1150 |

1. Dual GNSS and at least one IRU or equivalent
2. DME/DME, LOC and VOR/DME updating not authorized
3. For uncompensated Baro-VNAV systems, procedure not authorized below AD temp -15°C
4. VPA exceeds 3.6° above +12°C
5. PAPI angle not coincident with the VPA

This procedure is permissible for special equipped aircraft and requires authorization by Austro Control GmbH

MISSED APPROACH:
CLIMB VIA WS823 AND SBG TO 6000 FT AMSL AND HOLD.

(for detailed information see LOWS AD 2.22, Item 9)

| Instrument Approach Procedure Coding Table Salzburg RNP Z RWY 33 (AR) - via ETROK | | | | | | | | | | |
|--|-------------------------|------------------------|-----------------|-----------------------------|---|------------|-------------------|------------------------|---------------------------|------------------|
| Path Terminator | Waypoint | | | | Course/Track ° MAG (° True) | DIST NM | Turn Direction | ARC Centre Waypoint | | ARC Radius NM |
| | Identifier | Type | Flyover | Coordinates | | | | Identifier | Coordinates | |
| IF | ETROK | IAF | no | N473227.17 E0132251.17 | | | | | | |
| TF | WS806 | | no | N473509.18 E0131319.96 | 289° (292.8°) | 7.0 | | | | |
| RF | WS805 | IF | no | N473850.16 E0130854.96 | | 4.9 | right | WS822 | N473945.81 E0131611.01 | 5.0 |
| TF | WS804 | FAP | no | N474221.95 E0130702.79 | 336° (340.3°) | 3.8 | | | | |
| RF | WS803 | | no | N474350.81 E0130508.18 | | 2.0 | left | WS821 | N474127.34 E0130317.04 | 2.7 |
| TF | WS802 | | no | N474431.87 E0130311.74 | 294° (297.6°) | 1.5 | | | | |
| TF | WS801 | | no | N474455.14 E0130221.70 | 301° (304.6°) | 0.7 | right | | | |
| RF | WS800 | | no | N474539.81 E0130127.60 | | 1.0 | right | WS820 | N474620.41 E0130348.99 | 1.7 |
| TF | RW33 | | yes | N474702.57 E0130035.34 | 333° (336.9°) | 1.5 | | | | |
| TF | WS823 | MATF | no | N475704.79 E0125413.55 | 333° (336.9°) | 10.9 | | | | |
| TF | SBG | MAHF | yes | N480009.30 E0125333.94 | 348° (351.8°) | 3.1 | right | | | |
| Waypoint | Constraints | | RNP Value NM | Navigation Specification | Remarks | | | | | |
| Identifier | Level | Speed | | | | | | | | |
| ETROK | A10000+ | | 0.3 | RNP AR APCH | | | | | | |
| WS806 | A7400+ | | 0.3 | RNP AR APCH | | | | | | |
| WS805 | A5500+ | | 0.3 | RNP AR APCH | | | | | | |
| WS804 | A4000+ | | 0.3 | RNP AR APCH | | | | | | |
| WS803 | | | 0.3 | RNP AR APCH | | | | | | |
| WS802 | | | 0.3 | RNP AR APCH | | | | | | |
| WS801 | | | 0.3 | RNP AR APCH | | | | | | |
| WS800 | | | 0.3 | RNP AR APCH | | | | | | |
| RW33 | | | 0.3 | RNP AR APCH | | | | | | |
| WS823 | | | 1.0 | RNP AR APCH | | | | | | |
| SBG | A6000+ | | 1.0 | RNP AR APCH | | | | | | |
| RNAV Holding | | | | | | | | | | |
| Holding Point | Inbound Track ° True | Inbound Track ° MAG | Turn Direction | MAX IAS | Minimum Holding Altitude FT MSL / FL | Time | DIST NM | Remarks | | |
| SBG | 178.8° | 175° | left | | A6000 | 1 MIN | | | | |

**Instrument Approach Procedure Coding Table
Salzburg RNP Z RWY 33 (AR) - via KONUG**

| Path Terminator | Waypoint | | | | Course/ Track ° MAG (° True) | DIST NM | Turn Direction | ARC Centre Waypoint | | ARC Radius NM |
|-----------------|------------|------|---------|---------------------------|---------------------------------------|------------|-------------------|------------------------|---------------------------|------------------|
| | Identifier | Type | Flyover | Coordinates | | | | Identifier | Coordinates | |
| IF | KONUG | IAF | no | N472306.07 E0131004.66 | | | | | | |
| TF | WS811 | | no | N472542.82 E0130959.79 | 355° (358.8°) | 2.6 | | | | |
| TF | WS810 | | no | N472819.58 E0130954.91 | 355° (358.8°) | 2.6 | | | | |
| TF | WS809 | | no | N473105.81 E0130949.73 | 355° (358.8°) | 2.8 | | | | |
| TF | WS808 | | no | N473234.56 E0131018.56 | 009° (012.4°) | 1.5 | right | | | |
| TF | WS807 | | no | N473611.40 E0130939.49 | 349° (353.1°) | 3.6 | left | | | |
| TF | WS805 | IF | no | N473850.16 E0130854.96 | 345° (349.3°) | 2.7 | left | | | |
| TF | WS804 | FAP | no | N474221.95 E0130702.79 | 336° (340.3°) | 3.8 | left | | | |
| RF | WS803 | | no | N474350.81 E0130508.18 | | 2.0 | left | WS821 | N474127.34 E0130317.04 | 2.7 |
| TF | WS802 | | no | N474431.87 E0130311.74 | 294° (297.6°) | 1.5 | | | | |
| TF | WS801 | | no | N474455.14 E0130221.70 | 301° (304.6°) | 0.7 | right | | | |
| RF | WS800 | | no | N474539.81 E0130127.60 | | 1.0 | right | WS820 | N474620.41 E0130348.99 | 1.7 |
| TF | RW33 | | yes | N474702.57 E0130035.34 | 333° (336.9°) | 1.5 | | | | |
| TF | WS823 | MATF | no | N475704.79 E0125413.55 | 333° (336.9°) | 10.9 | | | | |
| TF | SBG | MAHF | yes | N480009.30 E0125333.94 | 348° (351.8°) | 3.1 | right | | | |

| Waypoint | Constraints | | RNP Value NM | Navigation Specification | Remarks |
|----------|-------------|-------|-----------------|-----------------------------|---------|
| | Level | Speed | | | |
| KONUG | A11500+ | | 0.3 | RNP AR APCH | |
| WS811 | A10500+ | | 0.3 | RNP AR APCH | |
| WS810 | A9500+ | | 0.3 | RNP AR APCH | |
| WS809 | A8500+ | | 0.3 | RNP AR APCH | |
| WS808 | A7900+ | | 0.3 | RNP AR APCH | |
| WS807 | A6500+ | | 0.3 | RNP AR APCH | |
| WS805 | A5500+ | | 0.3 | RNP AR APCH | |
| WS804 | A4000+ | | 0.3 | RNP AR APCH | |
| WS803 | | | 0.3 | RNP AR APCH | |
| WS802 | | | 0.3 | RNP AR APCH | |
| WS801 | | | 0.3 | RNP AR APCH | |
| WS800 | | | 0.3 | RNP AR APCH | |
| RW33 | | | 0.3 | RNP AR APCH | |
| WS823 | | | 1.0 | RNP AR APCH | |
| SBG | A6000+ | | 1.0 | RNP AR APCH | |

RNAV Holding

| Holding Point | Inbound Track ° True | Inbound Track ° MAG | Turn Direction | MAX IAS | Minimum Holding Altitude FT MSL / FL | Time | DIST NM | Remarks |
|---------------|-------------------------|------------------------|----------------|---------|---|-------|------------|---------|
| SBG | 178.8° | 175° | left | | A6000 | 1 MIN | | |