

**INSTRUMENT  
APPROACH  
CHART - ICAO**

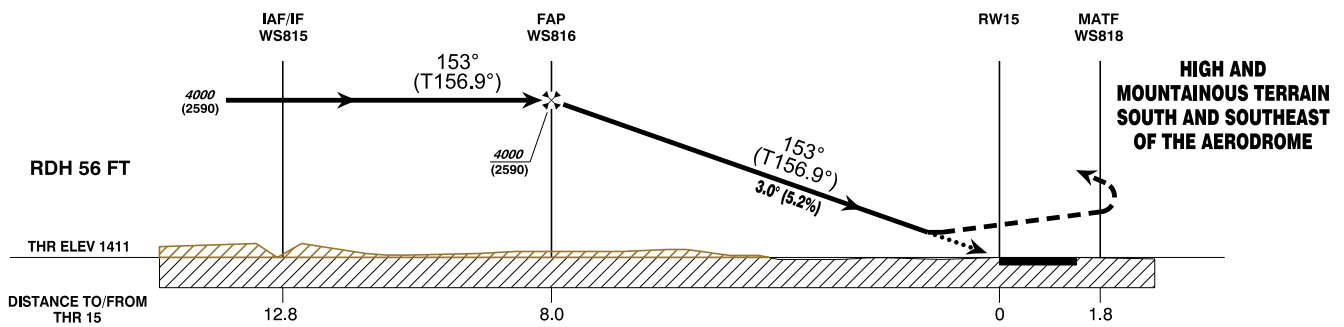
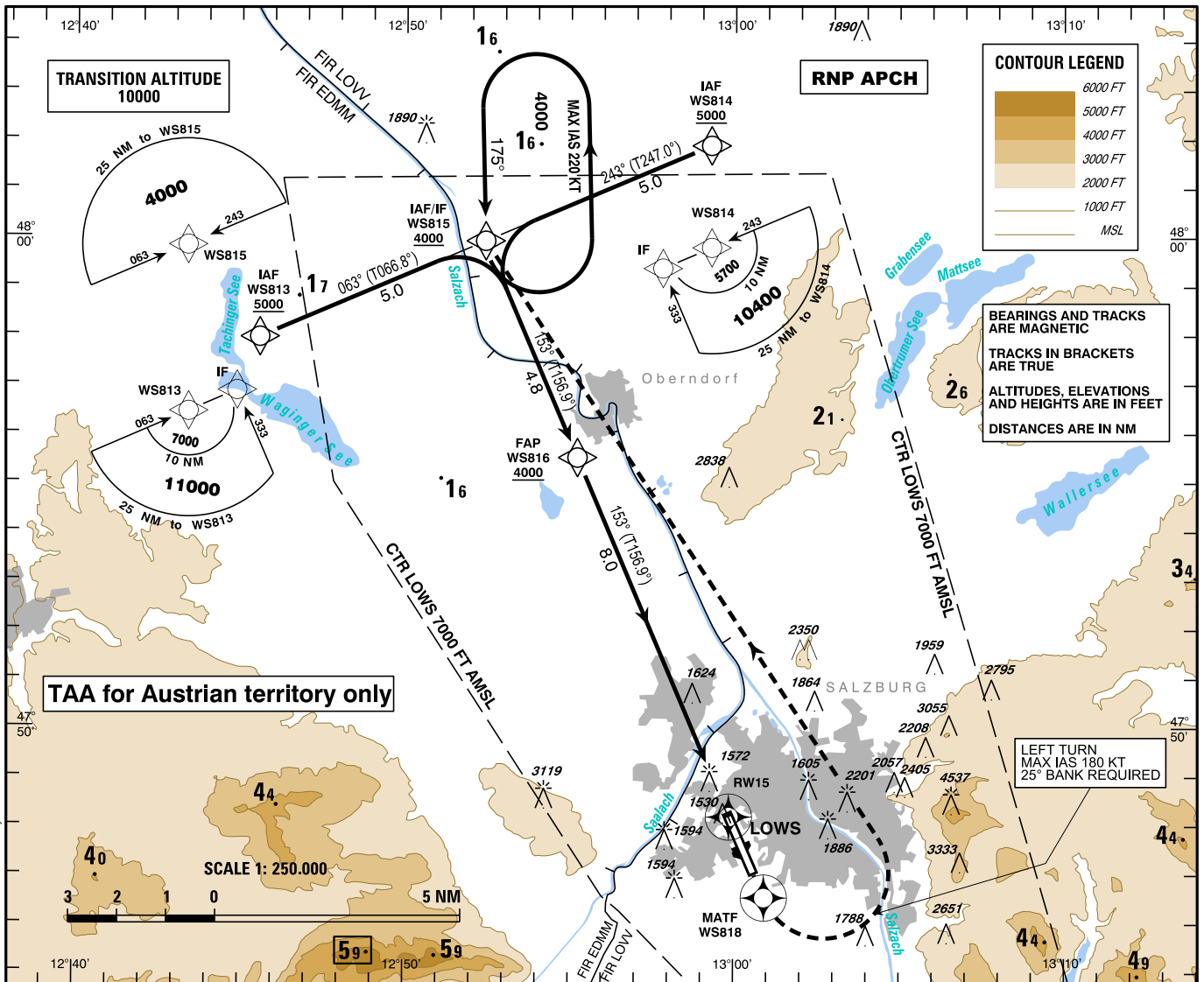
AD ELEV 1411 FT  
THR 15 ELEV 1411 FT  
HGT RELATED TO AD ELEV

RADAR 123.725  
TOWER 132.460  
ATIS 118.100  
133.330

EGNOS  
CH 52375  
E15A

**SALZBURG**  
ÖSTERREICH AUSTRIA  
RNP E RWY 15 (LPV only)

VAR 4° E



**MISSED APPROACH:** CLIMB STRAIGHT AHEAD, AT WS818 TURN LEFT DIRECT TO WS815; CLIMB TO 6000 FT AMSL AND HOLD.  
NOTE: MISSED APPROACH SPEED IS LIMITED TO MAX IAS 180 KT DURING THE TURN WITH MINIMUM BANK ANGLE OF 25°!

	MA - CLIMB GRADIENT	A	B	C	D / D <sub>L</sub>
<b>OCA (OCH) IN FT</b>	2.5 %	1931 (520)	1944 (533)	2201 (790)	2211 (800)
	4.5 %	1688 (277)	1701 (290)	1776 (356)	1786 (375)
	6.5 %	1611 (200)	1611 (200)	1672 (261)	1682 (271)

DIST in NM to RW15	7.0	6.0	5.0	4.0	3.0	2.0
<b>ALTITUDE (HEIGHT)</b>	3740 (2329)	3410 (1999)	3080 (1669)	2750 (1337)	2430 (1013)	2110 (699)

<b>WS816 to RW15 - DISTANCE 8.0 NM</b> (Timing not authorized for defining the MAP)							
	GS (KT)	80	100	120	140	160	180
WS816 - RW15	MIN : SEC	5:59	4:47	3:59	3:25	3:00	2:40
Rate of descent (5.2%)	FT / MIN	420	530	630	740	840	950

Instrument Approach Procedure Coding Table Salzburg RNP E RWY 15											
Path Terminator	Waypoint				Course/ Track ° MAG (° True)	DIST NM	Turn Direction	Constraints		Navigation Specification	Remarks
	Identifier	Type	Flyover	Coordinates				Level	Speed		
IF	WS813	IAF	no	N475756.96 E0124534.51				A5000+		RNP APCH	
IF	WS814	IAF	no	N480152.57 E0125916.35				A5000+		RNP APCH	
IF / TF	WS815	IAF / IF	no	N475954.97 E0125225.17	063° (066.8°) 243° (247.0°)	5.0		A4000+		RNP APCH	
TF	WS816	FAP	no	N475530.24 E0125513.67	153° (156.9°)	4.8	right left	A4000+		RNP APCH	
TF	RW15		yes	N474811.32 E0125951.89	153° (156.9°)	8.0				RNP APCH	
TF	WS818	MATF	yes	N474634.70 E0130052.94	153° (156.9°)	1.8				RNP APCH	
DF	WS815	MAHF	yes	N475954.97 E0125225.17			left	A6000+	K180-	RNP APCH	25° bank required
<b>RNAV Holding</b>											
Holding Point	Inbound Track ° True	Inbound Track ° MAG	Turn Direction	MAX IAS	Minimum Holding Altitude FT MSL / FL	Time	DIST NM	Remarks			
WS815	178.8°	175°	left	K220-	A4000	1 MIN					

**SBAS FAS Data Block Coding Table  
Salzburg RNP E RWY 15**

**Input data**

Operation Type	0
SBAS Provider	1 (EGNOS)
Airport Identifier	LOWS
Runway	15
Runway Letter	0 (None)
Approach Performance Designator	0
Route Indicator	E
Reference Path Data Selector	0
Reference Path Identifier	E15A
LTP/FTP Latitude	474811.3200N
LTP/FTP Longitude	0125951.8900E
LTP/FTP Ellipsoidal Height (metres)	475.3
FPAP Latitude	474653.3180N
Delta FPAP Latitude (seconds)	-78.0020
FPAP Longitude	0130041.1850E
Delta FPAP Longitude (seconds)	49.2950
Threshold Crossing Height	56.0
TCH Units Selector	0 (feet)
Glidepath Angle (degrees)	3.00
Course Width (metres)	102.25
Length Offset (metres)	312
HAL (metres)	40.0
VAL (metres)	35.0

**Output data**

Data Block	10 13 17 0F 0C 0F 28 00 01 35 31 05 70 CF 83 14 A4 F9 93 05 91 26 9C 9E FD 1E 81 01 30 02 2C 01 59 27 C8 AF 80 32 BF 64
Calculated CRC Value	8032BF64

**Required Additional data**

ICAO Code	LO
LTP/FTP Orthometric Height (metres)	430.0