

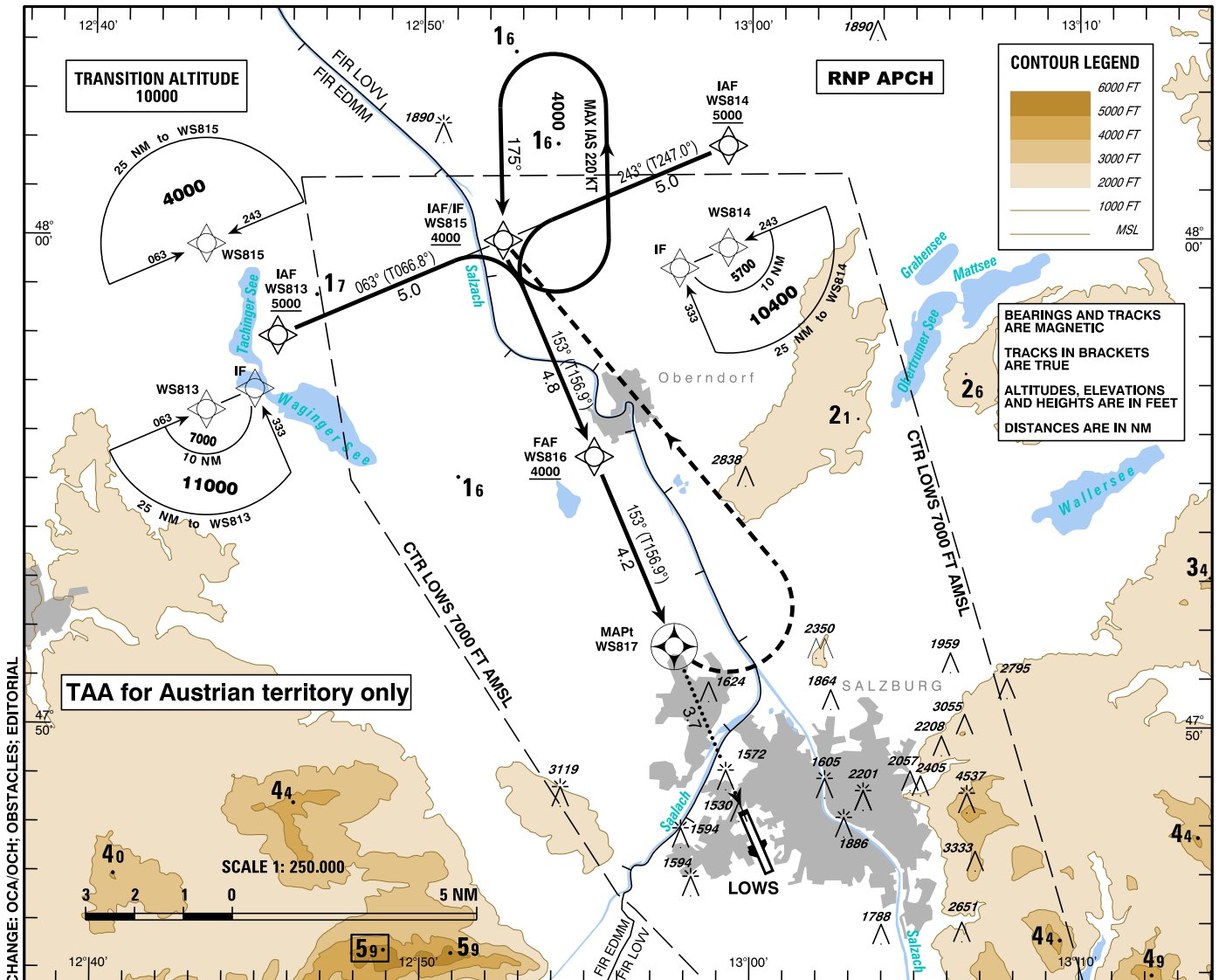
**INSTRUMENT  
APPROACH  
CHART - ICAO**

VAR 4° E

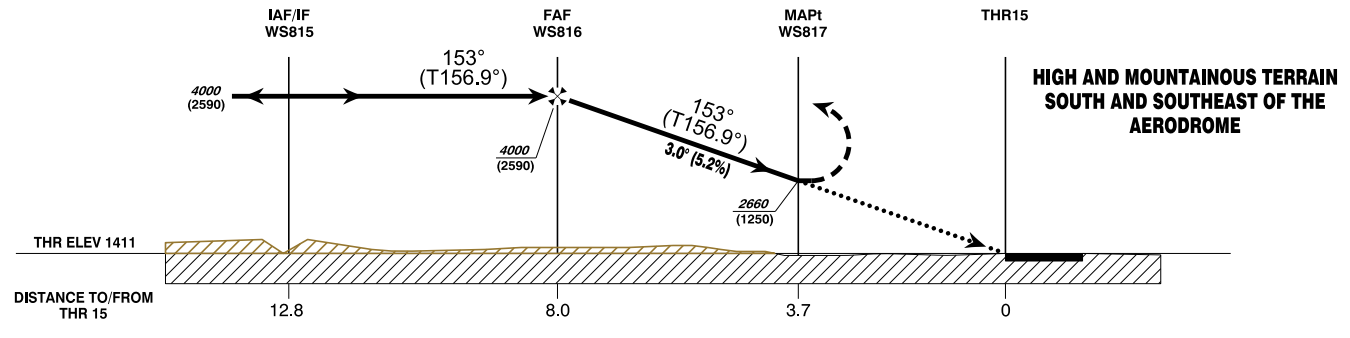
AD ELEV 1411 FT  
THR 15 ELEV 1411 FT  
HGT RELATED TO AD ELEV

RADAR 123.725  
132.460  
TOWER 118.100  
ATIS 133.330

**SALZBURG**  
ÖSTERREICH AUSTRIA  
RNP X RWY 15



CHANGE: OCA/OCH; OBSTACLES; EDITORIAL



**MISSED APPROACH:** AT WS817 TURN LEFT DIRECT TO WS815; CLIMB TO 6000 FT AMSL AND HOLD.  
NOTE: MISSED APPROACH SPEED IS LIMITED TO MAX IAS 185 KT UNTIL TURN COMPLETED !

| OCA (OCH) IN FT | A                      | B | C | D |
|-----------------|------------------------|---|---|---|
| LNAV            | 2660 (1250)            |   |   |   |
| CIRCLING        | see LOWS AD 2 MAP 14-1 |   |   |   |

|                     |             |             |             |             |
|---------------------|-------------|-------------|-------------|-------------|
| DIST in NM to THR   | 7.0         | 6.0         | 5.0         | 4.0         |
| DIST in NM to WS817 | 3.3         | 2.3         | 1.3         | 0.3         |
| ALTITUDE (HEIGHT)   | 3700 (2289) | 3380 (1969) | 3060 (1649) | 2740 (1329) |

| WS816 to WS817 - DISTANCE 4.2 NM              |           |      |      |      |      |      |      |
|-----------------------------------------------|-----------|------|------|------|------|------|------|
| (Timing not authorized for defining the MAPt) |           |      |      |      |      |      |      |
|                                               | GS (KT)   | 80   | 100  | 120  | 140  | 160  | 180  |
| WS816 - WS817                                 | MIN : SEC | 3:09 | 2:31 | 2:06 | 1:48 | 1:35 | 1:24 |
| Rate of descent (5.2%)                        | FT / MIN  | 430  | 530  | 640  | 740  | 850  | 960  |
| WS816 - RWY 15                                | MIN : SEC | 5:59 | 4:47 | 3:59 | 3:25 | 3:00 | 2:40 |

| Instrument Approach Procedure Coding Table<br>Salzburg RNP X RWY 15 |                        |                     |                |                           |                                       |            |                   |             |       |                             |         |
|---------------------------------------------------------------------|------------------------|---------------------|----------------|---------------------------|---------------------------------------|------------|-------------------|-------------|-------|-----------------------------|---------|
| Path Terminator                                                     | Waypoint               |                     |                |                           | Course/<br>Track<br>° MAG<br>(° True) | DIST<br>NM | Turn<br>Direction | Constraints |       | Navigation<br>Specification | Remarks |
|                                                                     | Identifier             | Type                | Flyover        | Coordinates               |                                       |            |                   | Level       | Speed |                             |         |
| IF                                                                  | WS813                  | IAF                 | no             | N475756.96<br>E0124534.51 |                                       |            |                   | A5000+      |       | RNP APCH                    |         |
| IF                                                                  | WS814                  | IAF                 | no             | N480152.57<br>E0125916.35 |                                       |            |                   | A5000+      |       | RNP APCH                    |         |
| IF / TF                                                             | WS815                  | IAF / IF            | no             | N475954.97<br>E0125225.17 | 063°<br>(066.8°)                      | 5.0        |                   | A4000+      |       | RNP APCH                    |         |
|                                                                     |                        |                     |                |                           | 243°<br>(247.0°)                      |            |                   |             |       |                             |         |
| TF                                                                  | WS816                  | FAF                 | no             | N475530.24<br>E0125513.67 | 153°<br>(156.9°)                      | 4.8        | right             | A4000+      |       | RNP APCH                    |         |
|                                                                     |                        |                     |                |                           |                                       |            | left              |             |       |                             |         |
| TF                                                                  | WS817                  | MAPt                | yes            | N475137.70<br>E0125741.28 | 153°<br>(156.9°)                      | 4.2        |                   |             |       | RNP APCH                    |         |
| DF                                                                  | WS815                  | MAHF                | yes            | N475954.97<br>E0125225.17 |                                       |            | left              | A6000+      | K185- | RNP APCH                    |         |
| <b>RNAV Holding</b>                                                 |                        |                     |                |                           |                                       |            |                   |             |       |                             |         |
| Holding Point                                                       | Inbound Track ° True   | Inbound Track ° MAG | Turn Direction | MAX IAS                   | Minimum Holding Altitude FT MSL / FL  | Time       | DIST NM           | Remarks     |       |                             |         |
| WS815                                                               | 178.8°                 | 175°                | left           | K220-                     | A4000                                 | 1 MIN      |                   |             |       |                             |         |
| <b>THR Coordinates</b>                                              |                        |                     |                |                           |                                       |            |                   |             |       |                             |         |
| RWY 15                                                              | N474811.32 E0125951.89 |                     |                |                           |                                       |            |                   |             |       |                             |         |