

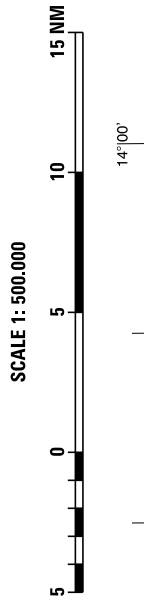
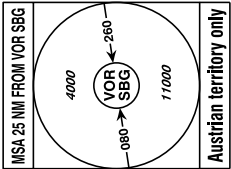
**RADAR**  
123.725  
132.460  
118.100  
133.330

**TOWER**  
118.100

**ATIS**  
133.330

**TRANSITION ALTITUDE**  
10000

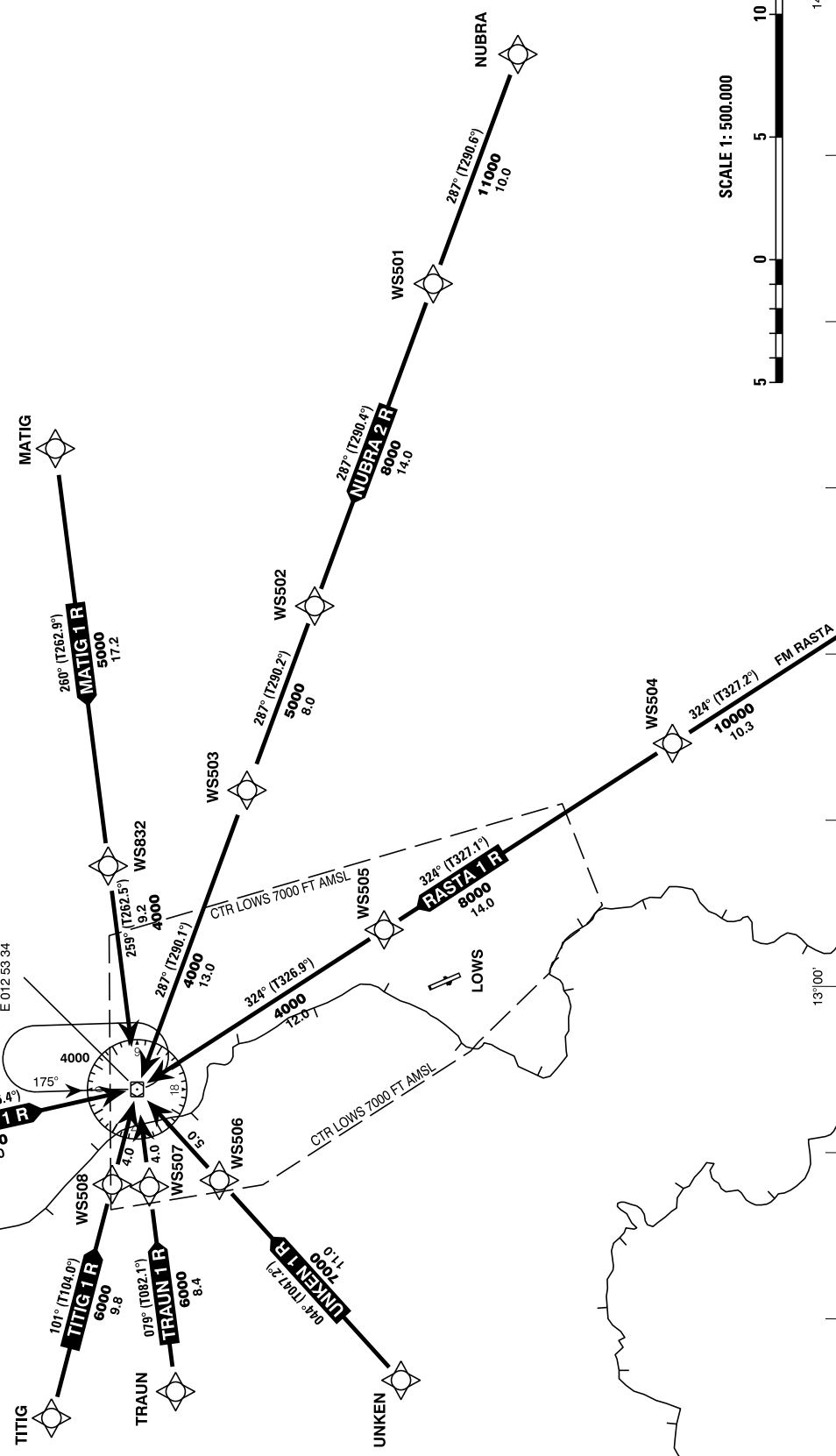
**BEARINGS AND TRACKS ARE MAGNETIC**  
**TRACKS IN BRACKETS ARE TRUE**  
**ALTITUDES, ELEVATIONS AND HEIGHTS ARE IN FEET**  
**DISTANCES ARE IN NM**



**RNAV REMARKS**  
- Non-RNAV aircraft expect radar vectors to final approach

**GNSS required**  
**RNAV 5 approval required**

**SALZBURG**  
113.80 SBG 85X  
ELEV 1494  
N 48 00 09  
E 012 53 34



CHANGE: EDITORIAL

Designator	Route							Remarks		
<b>BADIT 1 R</b> Badit one romeo arrival	BADIT - VOR/DME SBG									
RNAV STAR Coding Table of BADIT 1 R										
Path Terminator	Waypoint			Course/Track ° MAG (° True)	DIST NM	Turn Direction	Constraints		Navigation Specification	Remarks
	Identifier	Flyover	Coordinates				Crossing ALT	Speed		
IF	BADIT	no	N480952.00 E0125004.00				A4000+		RNAV 5	
TF	VOR/DME SBG	no	N480009.30 E0125333.94	163° (166.4°)	10.0		A4000+		RNAV 5	

Designator	Route							Remarks		
<b>MATIG 1 R</b> Matig one romeo arrival	MATIG - WS832 - VOR/DME SBG									
RNAV STAR Coding Table of MATIG 1 R										
Path Terminator	Waypoint			Course/Track ° MAG (° True)	DIST NM	Turn Direction	Constraints		Navigation Specification	Remarks
	Identifier	Flyover	Coordinates				Crossing ALT	Speed		
IF	MATIG	no	N480330.93 E0133229.38				A5000+		RNAV 5	
TF	WS832	no	N480121.80 E0130707.80	260° (262.9°)	17.2		A5000+		RNAV 5	
TF	VOR/DME SBG	no	N480009.30 E0125333.94	259° (262.5°)	9.2		A4000+		RNAV 5	

Designator	Route						Remarks			
<b>NUBRA 2 R</b> Nubra two romeo arrival	NUBRA - WS501 - WS502 - WS503 - VOR/DME SBG									
RNAV STAR Coding Table of NUBRA 2 R										
Path Terminator	Waypoint			Course/ Track ° MAG (° True)	DIST NM	Turn Direction	Constraints		Navigation Specification	Remarks
	Identifier	Flyover	Coordinates				Crossing ALT	Speed		
IF	NUBRA	no	N474435.05 E0135616.49				A11000+		RNAV 5	
TF	WS501	no	N474805.62 E0134223.62	287° (290.6°)	10.0		A11000+		RNAV 5	
TF	WS502	no	N475257.58 E0132254.47	287° (290.4°)	14.0		A8000+		RNAV 5	
TF	WS503	no	N475542.93 E0131144.75	287° (290.2°)	8.0		A5000+		RNAV 5	
TF	VOR/DME SBG	no	N480009.30 E0125333.94	287° (290.1°)	13.0		A4000+		RNAV 5	

Designator	Route						Remarks			
<b>RASTA 1 R</b> Rasta one romeo arrival	RASTA - WS504 - WS505 - VOR/DME SBG									
RNAV STAR Coding Table of RASTA 1 R										
Path Terminator	Waypoint			Course/ Track ° MAG (° True)	DIST NM	Turn Direction	Constraints		Navigation Specification	Remarks
	Identifier	Flyover	Coordinates				Crossing ALT	Speed		
IF	RASTA	no	N472943.54 E0132252.92				A12000+		RNAV 5	
TF	WS504	no	N473822.72 E0131436.94	324° (327.2°)	10.3		A10000+		RNAV 5	
TF	WS505	no	N475006.75 E0130319.05	324° (327.1°)	14.0		A8000+		RNAV 5	
TF	VOR/DME SBG	no	N480009.30 E0125333.94	324° (326.9°)	12.0		A4000+		RNAV 5	

Designator	Route							Remarks		
<b>TITIG 1 R</b> Titig one romeo arrival	TITIG - WS508 - VOR/DME SBG									
RNAV STAR Coding Table of TITIG 1 R										
Path Terminator	Waypoint			Course/ Track ° MAG (° True)	DIST NM	Turn Direction	Constraints		Navigation Specification	Remarks
	Identifier	Flyover	Coordinates				Crossing ALT	Speed		
IF	TITIG	no	N480332.00 E0123334.00				A6000+		RNAV 5	
TF	WS508	no	N480108.23 E0124747.45	101° (104.0°)	9.8		A6000+		RNAV 5	
TF	VOR/DME SBG	no	N480009.30 E0125333.94	101° (104.2°)	4.0		A4000+		RNAV 5	

Designator	Route							Remarks		
<b>TRAUN 1 R</b> Traun one romeo arrival	TRAUN - WS507 - VOR/DME SBG									
RNAV STAR Coding Table of TRAUN 1 R										
Path Terminator	Waypoint			Course/ Track ° MAG (° True)	DIST NM	Turn Direction	Constraints		Navigation Specification	Remarks
	Identifier	Flyover	Coordinates				Crossing ALT	Speed		
IF	TRAUN	no	N475829.00 E0123515.00				A6000+		RNAV 5	
TF	WS507	no	N475937.30 E0124739.77	079° (082.1°)	8.4		A6000+		RNAV 5	
TF	VOR/DME SBG	no	N480009.30 E0125333.94	079° (082.3°)	4.0		A4000+		RNAV 5	

Designator	Route							Remarks		
<b>UNKEN 1 R</b> Unken one romeo arrival	UNKEN - WS506 - VOR/DME SBG									
RNAV STAR Coding Table of UNKEN 1 R										
Path Terminator	Waypoint			Course/ Track ° MAG (° True)	DIST NM	Turn Direction	Constraints		Navigation Specification	Remarks
	Identifier	Flyover	Coordinates				Crossing ALT	Speed		
IF	UNKEN	no	N474918.42 E0123603.59				A7000+		RNAV 5	
TF	WS506	no	N475646.39 E0124805.24	044° (047.2°)	11.0		A7000+		RNAV 5	
TF	VOR/DME SBG	no	N480009.30 E0125333.94	044° (047.4°)	5.0		A4000+		RNAV 5	

RNAV Holding								
Holding Point	Inbound Track ° True	Inbound Track ° MAG	Turn Direction	MAX IAS	Minimum Holding Altitude FT MSL / FL	Time	DIST NM	Remarks
VOR/DME SBG	178.8°	176°	left		A4000	1 MIN		