

INSTRUMENT APPROACH CHART - ICAO

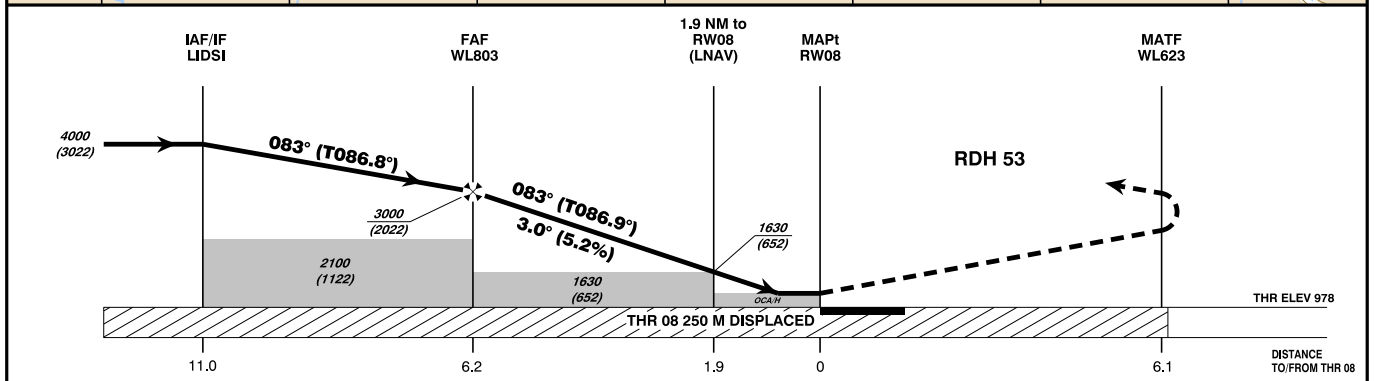
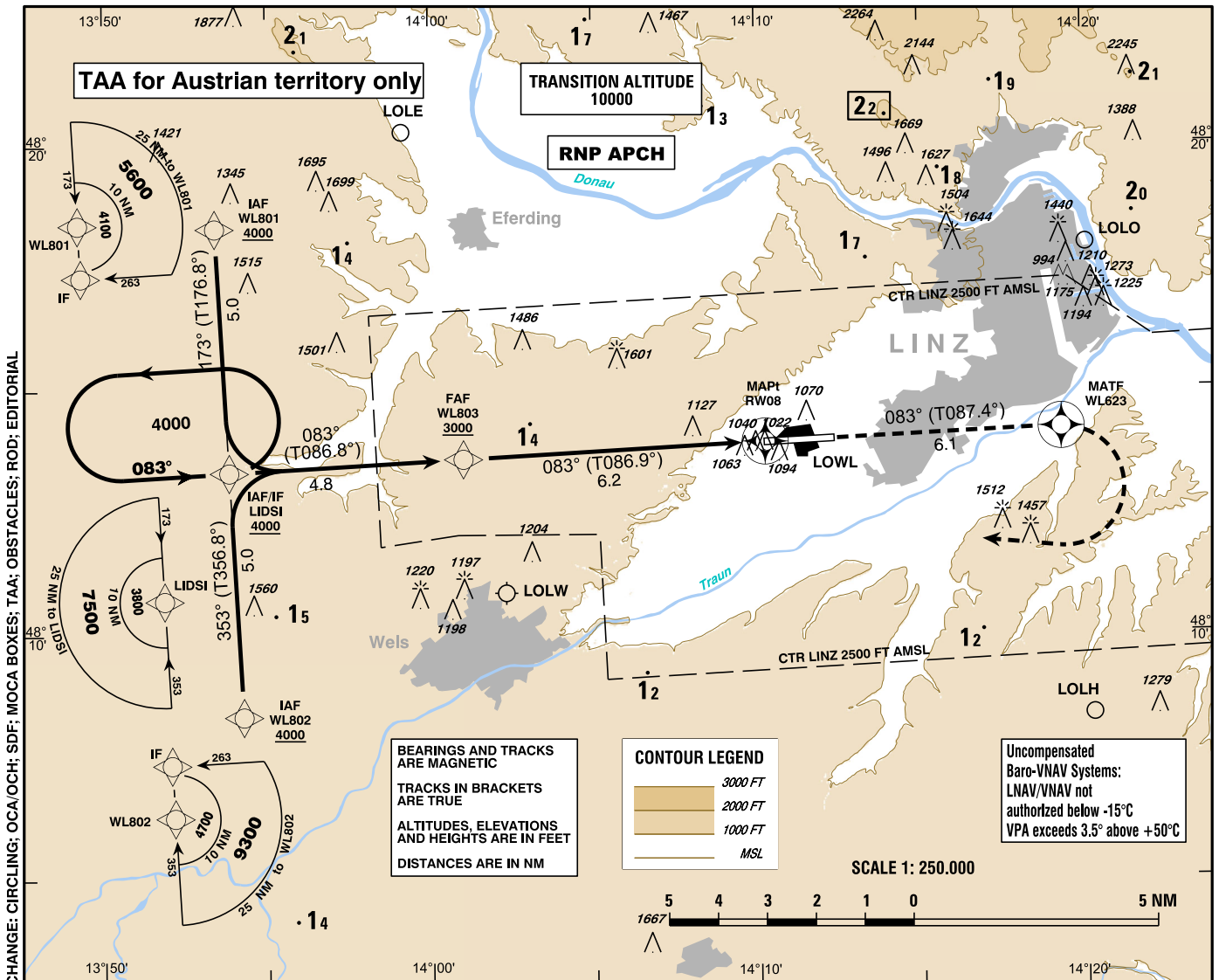
VAR 4° E

AD ELEV 980 FT
THR 08 ELEV 978 FT
HGT RELATED TO THR ELEV
CIRCLING HGT RELATED TO AD ELEV

RADAR 129.625
125.685
TOWER 118.800
ATIS 128.130

EGNOS
CH 41180
E08A

L I N Z
ÖSTERREICH AUSTRIA
RNP RWY 08



MISSED APPROACH : CLIMB STRAIGHT AHEAD TO WL623, THEN TURN RIGHT DIRECT TO LIDSJ; CLIMB TO 4000 FT AMSL AND HOLD.

OCA (OCH) IN FT	A	B	C	D / D _L
LNAV	1440 (470)			
LNAV/VNAV	1231 (253)	1243 (265)	1251 (273)	1261 (283)
LPV	1118 (140)	1131 (153)	1139 (161)	1149 (171)
CIRCLING	1470 (490)	1550 (570)	1910 (930)	
CIRCLING NOT AUTHORIZED NORTH OF THE AD				

WL803 to RW08 - DISTANCE 6.2 NM (Timing not authorized for defining the MAP1)							
GS (KT)	80	100	120	140	160	180	
WL803 - RW08	MIN : SEC	4:39	3:43	3:06	2:39	2:20	2:04
Rate of descent (5.2%)	FT / MIN	420	530	640	740	850	960

DIST in NM to RW08	6	5	4	3	2
ALTITUDE (HEIGHT)	2940 (1962)	2620 (1642)	2310 (1332)	1990 (1012)	1670 (692)

Instrument Approach Procedure Coding Table Linz RNP RWY 08											
Path Terminator	Waypoint				Course/ Track ° MAG (° True)	DIST NM	Turn Direction	Constraints		Navigation Specification	Remarks
	Identifier	Type	Flyover	Coordinates				Level	Speed		
IF	WL801	IAF	no	N481821.60 E0135325.41				A4000+		RNP APCH	
IF	WL802	IAF	no	N480822.76 E0135415.10				A4000+		RNP APCH	
IF / TF	LIDSI	IAF / IF	no	N481322.19 E0135350.30	353° (356.8°) 173° (176.8°)	5.0		A4000+		RNP APCH	
TF	WL803	FAF	no	N481337.91 E0140100.50	083° (086.8°)	4.8	right left	A3000+		RNP APCH	
TF	RW08	MAPt	yes	N481357.50 E0141014.67	083° (086.9°)	6.2				RNP APCH	
TF	WL623	MATF	yes	N481413.56 E0141918.42	083° (087.4°)	6.1				RNP APCH	
DF	LIDSI	MAHF	yes	N481322.19 E0135350.30			right	A4000+		RNP APCH	
RNAV Holding											
Holding Point	Inbound Track ° True	Inbound Track ° MAG	Turn Direction	MAX IAS	Minimum Holding Altitude FT MSL / FL	Time	DIST NM	Remarks			
LIDSI	086.8°	083°	left		A4000	1 MIN					

SBAS FAS Data Block Coding Table Linz RNP RWY 08	
Input data	
Operation Type	0
SBAS Provider	1
Airport Identifier	LOWL
Runway	08
Runway Direction	0
Approach Performance Designator	0
Route Indicator	
Reference Path Data Selector	0
Reference Path Identifier	E08A
LTP/FTP Latitude	481357.5000N
LTP/FTP Longitude	0141014.6700E
LTP/FTP Ellipsoidal Height (metres)	343.2
FPAP Latitude	481402.6110N
Delta FPAP Latitude (seconds)	5.1110
FPAP Longitude	0141242.8290E
Delta FPAP Longitude (seconds)	148.1590
Threshold Crossing Height	53.0
TCH Units Selector	0
Glidepath Angle (degrees)	3.00
Course Width (metres)	107.00
Length Offset (metres)	472
HAL (metres)	40.0
VAL (metres)	35.0
Output data	
Data Block	10 0C 17 0F 0C 08 00 00 01 38 30 05 F8 FE B2 14 1C D8 14 06 68 21 EE 27 00 7E 85 04 12 02 2C 01 6C 3B C8 AF 8F D9 8B 79
Calculated CRC Value	8FD98B79
Required Additional Data	
ICAO Code	LO
LTP/FTP Orthometric Height (metres)	298.2
FPAP Orthometric Height (metres)	298.2