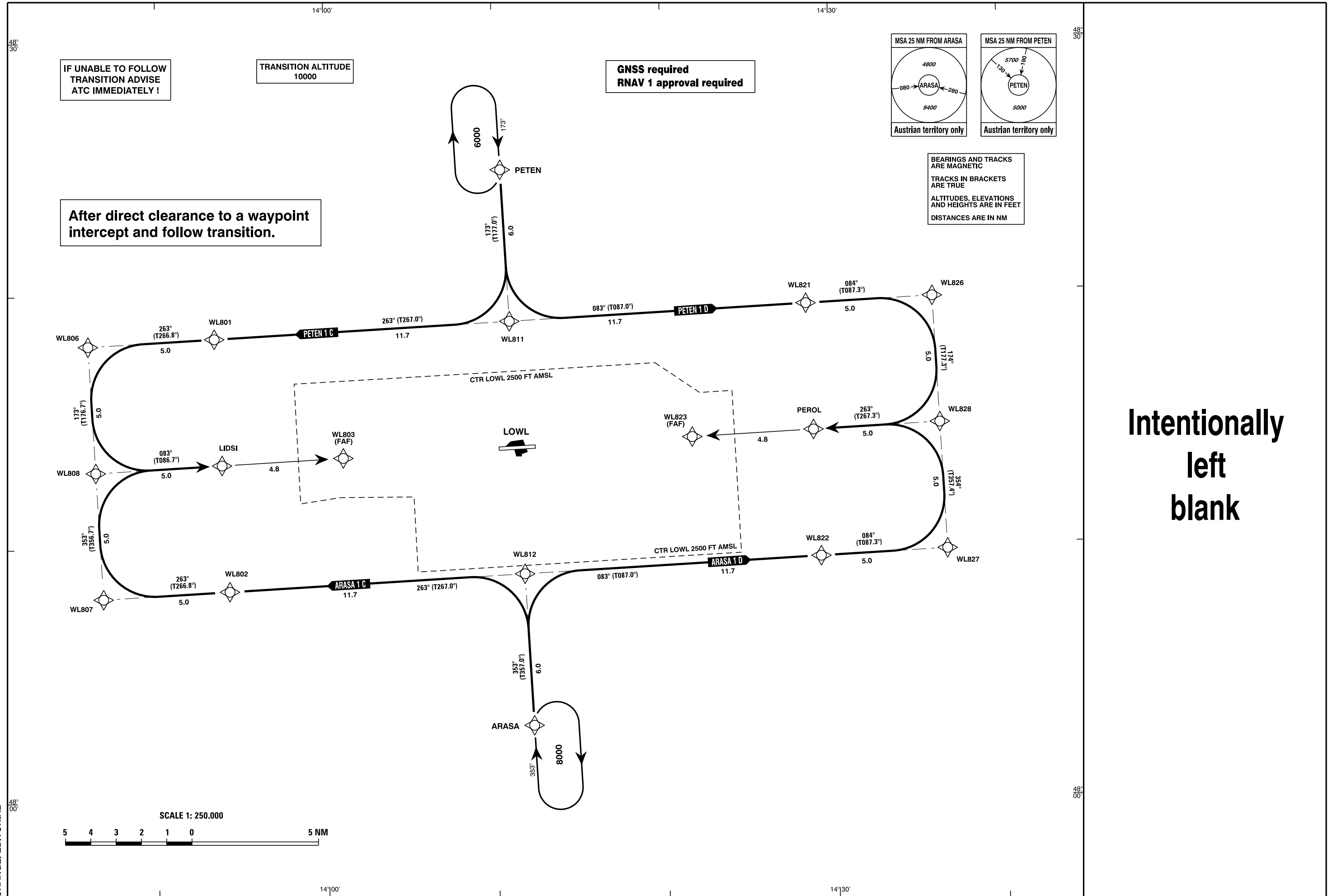


RADAR	129,625
TOWER	125,685
ATIS	118,800



CHANGE: EDITORIAL

Designator	Route							Remarks		
PETEN 1 C Peten one charlie transition	PETEN - WL811 - WL801 - WL806 - WL808 - LIDSI									
RNAV Transition Coding Table of PETEN 1 C										
Path Terminator	Waypoint			Course/ Track ° MAG (° True)	DIST NM	Turn Direction	Constraints		Navigation Specification	Remarks
	Identifier	Flyover	Coordinates				Level	Speed		
IF	PETEN	no	N482458.49 E0141026.08				A6000+		RNAV 1	
TF	WL811	no	N481859.14 E0141054.16	173° (177.0°)	6.0		A5000+		RNAV 1	
TF	WL801	no	N481821.60 E0135325.41	263° (267.0°)	11.7	right	A4000+	K230-	RNAV 1	
TF	WL806	no	N481804.73 E0134556.66	263° (266.8°)	5.0		A4000+	K230-	RNAV 1	
TF	WL808	no	N481305.35 E0134622.26	173° (176.7°)	5.0	left	A4000+	K230-	RNAV 1	
TF	LIDSI	no	N481322.19 E0135350.30	083° (086.7°)	5.0	left	A4000+	K230-	RNAV 1	

Designator	Route							Remarks		
PETEN 1 D Peten one delta transition	PETEN - WL811 - WL821 - WL826 - WL828 - PEROL									
RNAV Transition Coding Table of PETEN 1 D										
Path Terminator	Waypoint			Course/ Track ° MAG (° True)	DIST NM	Turn Direction	Constraints		Navigation Specification	Remarks
	Identifier	Flyover	Coordinates				Level	Speed		
IF	PETEN	no	N482458.49 E0141026.08				A6000+		RNAV 1	
TF	WL811	no	N481859.14 E0141054.16	173° (177.0°)	6.0		A5000+		RNAV 1	
TF	WL821	no	N481934.21 E0142827.85	083° (087.0°)	11.7	left	A5000+	K230-	RNAV 1	
TF	WL826	no	N481948.35 E0143557.03	084° (087.3°)	5.0		A4000+	K230-	RNAV 1	
TF	WL828	no	N481448.81 E0143617.85	174° (177.3°)	5.0	right	A4000+	K230-	RNAV 1	
TF	PEROL	no	N481434.69 E0142849.39	263° (267.3°)	5.0	right	A4000+	K230-	RNAV 1	

Designator	Route							Remarks		
ARASA 1 C Arasa one charlie transition	ARASA - WL812 - WL802 - WL807 - WL808 - LIDSI									
RNAV Transition Coding Table of ARASA 1 C										
Path Terminator	Waypoint			Course/ Track ° MAG (° True)	DIST NM	Turn Direction	Constraints		Navigation Specification	Remarks
	Identifier	Flyover	Coordinates				Level	Speed		
IF	ARASA	no	N480300.81 E0141208.51				A8000+		RNAV 1	
TF	WL812	no	N480900.20 E0141140.72	353° (357.0°)	6.0		A5000+		RNAV 1	
TF	WL802	no	N480822.76 E0135415.10	263° (267.0°)	11.7	left	A4000+	K230-	RNAV 1	
TF	WL807	no	N480805.94 E0134647.78	263° (266.8°)	5.0		A4000+	K230-	RNAV 1	
TF	WL808	no	N481305.35 E0134622.26	353° (356.7°)	5.0	right	A4000+	K230-	RNAV 1	
TF	LIDSI	no	N481322.19 E0135350.30	083° (086.7°)	5.0	right	A4000+	K230-	RNAV 1	

Designator	Route							Remarks		
ARASA 1 D Arasa one delta transition	ARASA - WL812 - WL822 - WL827 - WL828 - PEROL									
RNAV Transition Coding Table of ARASA 1 D										
Path Terminator	Waypoint			Course/ Track ° MAG (° True)	DIST NM	Turn Direction	Constraints		Navigation Specification	Remarks
	Identifier	Flyover	Coordinates				Level	Speed		
IF	ARASA	no	N480300.81 E0141208.51				A8000+		RNAV 1	
TF	WL812	no	N480900.20 E0141140.72	353° (357.0°)	6.0		A5000+		RNAV 1	
TF	WL822	no	N480935.15 E0142910.85	083° (087.0°)	11.7	right	A4000+	K230-	RNAV 1	
TF	WL827	no	N480949.25 E0143638.59	084° (087.3°)	5.0		A4000+	K230-	RNAV 1	
TF	WL828	no	N481448.81 E0143617.85	354° (357.4°)	5.0	left	A4000+	K230-	RNAV 1	
TF	PEROL	no	N481434.69 E0142849.39	263° (267.3°)	5.0	left	A4000+	K230-	RNAV 1	

RNAV Holding								
Holding Point	Inbound Track ° True	Inbound Track ° MAG	Turn Direction	MAX IAS	Minimum Holding Altitude FT MSL / FL	Time	DIST NM	Remarks
PETEN	177.0°	173°	right		A6000	1 MIN		
ARASA	357.0°	353°	right		A8000	1 MIN		