

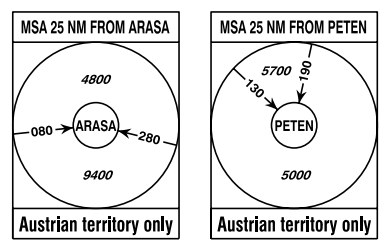
STANDARD ARRIVAL CHART - INSTRUMENT (STAR) - ICAO

VAR 4° E

RADAR 129.625  
TOWER 125.685  
ATIS 128.130

L I N Z  
ÖSTERREICH AUSTRIA

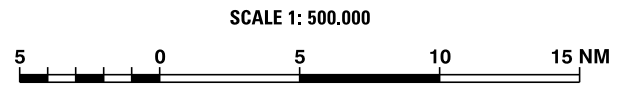
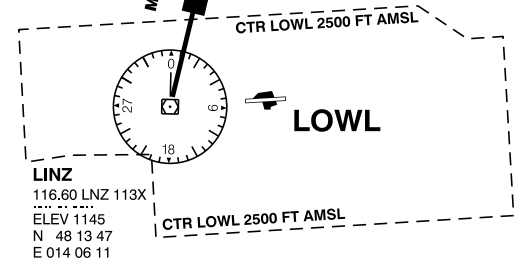
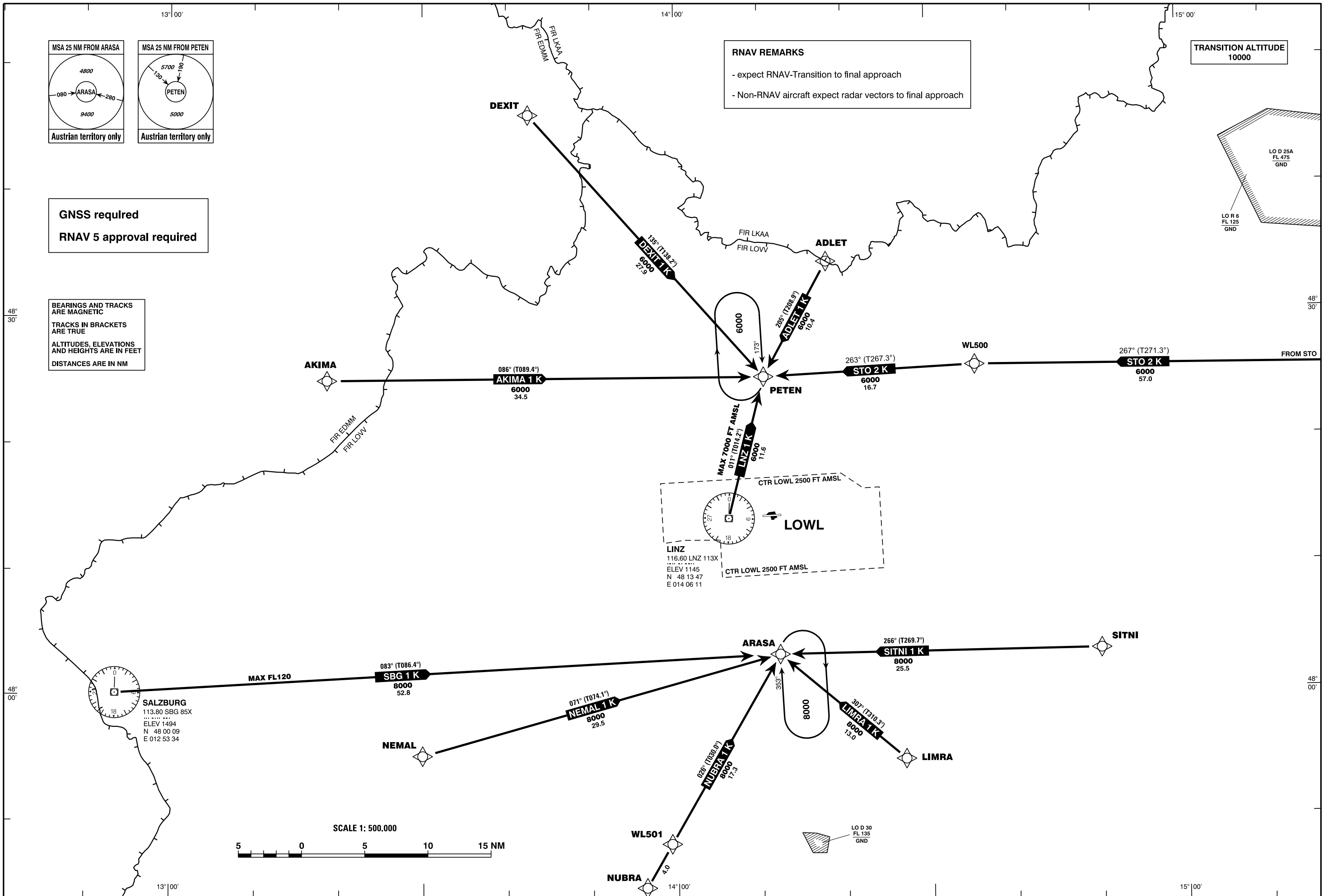
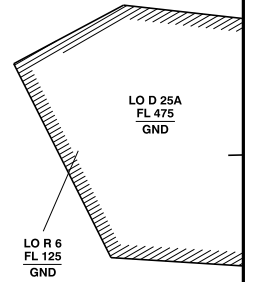
TRANSITION ALTITUDE  
10000



GNSS required  
RNAV 5 approval required

BEARINGS AND TRACKS  
ARE MAGNETIC  
TRACKS IN BRACKETS  
ARE TRUE  
ALTITUDES, ELEVATIONS  
AND HEIGHTS ARE IN FEET  
DISTANCES ARE IN NM

RNAV REMARKS  
- expect RNAV-Transition to final approach  
- Non-RNAV aircraft expect radar vectors to final approach



CHANGE: EDITORIAL

Designator	Route							Remarks		
<b>ADLET 1 K</b> Adlet one kilo arrival	ADLET - PETEN									
RNAV STAR Coding Table of ADLET 1 K										
Path Terminator	Waypoint			Course/ Track ° MAG (° True)	DIST NM	Turn Direction	Constraints		Navigation Specification	Remarks
	Identifier	Flyover	Coordinates				Crossing ALT	Speed		
IF	ADLET	no	N483403.36 E0141757.42				A6000+		RNAV 5	
TF	PETEN	no	N482458.49 E0141026.08	205° (208.9°)	10.4		A6000+		RNAV 5	

Designator	Route							Remarks		
<b>AKIMA 1 K</b> Akima one kilo arrival	AKIMA - PETEN									
RNAV STAR Coding Table of AKIMA 1 K										
Path Terminator	Waypoint			Course/ Track ° MAG (° True)	DIST NM	Turn Direction	Constraints		Navigation Specification	Remarks
	Identifier	Flyover	Coordinates				Crossing ALT	Speed		
IF	AKIMA	no	N482447.38 E0131837.49				A6000+		RNAV 5	
TF	PETEN	no	N482458.49 E0141026.08	086° (089.4°)	34.5		A6000+		RNAV 5	

Designator	Route							Remarks		
<b>DEXIT 1 K</b> Dexit one kilo arrival	DEXIT - PETEN									
RNAV STAR Coding Table of DEXIT 1 K										
Path Terminator	Waypoint			Course/ Track ° MAG (° True)	DIST NM	Turn Direction	Constraints		Navigation Specification	Remarks
	Identifier	Flyover	Coordinates				Crossing ALT	Speed		
IF	DEXIT	no	N484546.00 E0134233.00				A6000+		RNAV 5	
TF	PETEN	no	N482458.49 E0141026.08	135° (138.2°)	27.9		A6000+		RNAV 5	

Designator	Route							Remarks		
<b>LIMRA 1 K</b> Limra one kilo arrival	LIMRA - ARASA									
RNAV STAR Coding Table of LIMRA 1 K										
Path Terminator	Waypoint			Course/ Track ° MAG (° True)	DIST NM	Turn Direction	Constraints		Navigation Specification	Remarks
	Identifier	Flyover	Coordinates				Crossing ALT	Speed		
IF	LIMRA	no	N475439.53 E0142652.02				A8000+		RNAV 5	
TF	ARASA	no	N480300.81 E0141208.51	307° (310.3°)	13.0		A8000+		RNAV 5	

Designator	Route							Remarks		
<b>LNZ 1 K</b> Linz one kilo arrival	VOR/DME LNZ - PETEN									
RNAV STAR Coding Table of LNZ 1 K										
Path Terminator	Waypoint			Course/ Track ° MAG (° True)	DIST NM	Turn Direction	Constraints		Navigation Specification	Remarks
	Identifier	Flyover	Coordinates				Crossing ALT	Speed		
IF	VOR/DME LNZ	no	N481346.96 E0140611.36				A7000– A6000+		RNAV 5	
TF	PETEN	no	N482458.49 E0141026.08	011° (014.2°)	11.6		A7000– A6000+		RNAV 5	

Designator	Route							Remarks		
<b>NEMAL 1 K</b> Nemal one kilo arrival	NEMAL - ARASA									
RNAV STAR Coding Table of NEMAL 1 K										
Path Terminator	Waypoint			Course/ Track ° MAG (° True)	DIST NM	Turn Direction	Constraints		Navigation Specification	Remarks
	Identifier	Flyover	Coordinates				Crossing ALT	Speed		
IF	NEMAL	no	N475505.00 E0132954.00				A8000+		RNAV 5	
TF	ARASA	no	N480300.81 E0141208.51	071° (074.1°)	29.5		A8000+		RNAV 5	

Designator	Route						Remarks			
<b>NUBRA 1 K</b> Nubra one kilo arrival	NUBRA - WL501 - ARASA									
RNAV STAR Coding Table of NUBRA 1 K										
Path Terminator	Waypoint			Course/ Track ° MAG (° True)	DIST NM	Turn Direction	Constraints		Navigation Specification	Remarks
	Identifier	Flyover	Coordinates				Crossing ALT	Speed		
IF	NUBRA	no	N474435.05 E0135616.49				A11000+		RNAV 5	
TF	WL501	no	N474802.79 E0135914.34	026° (030.0°)	4.0		A11000+		RNAV 5	
TF	ARASA	no	N480300.81 E0141208.51	026° (030.0°)	17.3		A8000+		RNAV 5	

Designator	Route						Remarks			
<b>SBG 1 K</b> Salzburg one kilo arrival	VOR/DME SBG - ARASA									
RNAV STAR Coding Table of SBG 1 K										
Path Terminator	Waypoint			Course/ Track ° MAG (° True)	DIST NM	Turn Direction	Constraints		Navigation Specification	Remarks
	Identifier	Flyover	Coordinates				Crossing ALT	Speed		
IF	VOR/DME SBG	no	N480009.30 E0125333.94				F120– A8000+		RNAV 5	
TF	ARASA	no	N480300.81 E0141208.51	083° (086.4°)	52.8		F120– A8000+		RNAV 5	

Designator	Route						Remarks			
<b>SITNI 1 K</b> Sitni one kilo arrival	SITNI - ARASA									
RNAV STAR Coding Table of SITNI 1 K										
Path Terminator	Waypoint			Course/ Track ° MAG (° True)	DIST NM	Turn Direction	Constraints		Navigation Specification	Remarks
	Identifier	Flyover	Coordinates				Crossing ALT	Speed		
IF	SITNI	no	N480315.22 E0145004.61				A8000+		RNAV 5	
TF	ARASA	no	N480300.81 E0141208.51	266° (269.7°)	25.5		A8000+		RNAV 5	

Designator	Route	Remarks
<b>STO 2 K</b> Stockerau two kilo arrival	STO - WL500 - PETEN	

**RNAV STAR Coding Table of STO 2 K**

Path Terminator	Waypoint			Course/ Track ° MAG (° True)	DIST NM	Turn Direction	Constraints		Navigation Specification	Remarks
	Identifier	Flyover	Coordinates				Crossing ALT	Speed		
IF	STO	no	N482501.69 E0160106.94				F160- A6000+		RNAV 5	
TF	WL500	no	N482547.79 E0143531.95	267° (271.3°)	57.0		A6000+		RNAV 5	
TF	PETEN	no	N482458.49 E0141026.08	263° (267.3°)	16.7	left	A6000+		RNAV 5	

**RNAV Holding**

Holding Point	Inbound Track ° True	Inbound Track ° MAG	Turn Direction	MAX IAS	Minimum Holding Altitude FT MSL / FL	Time	DIST NM	Remarks
PETEN	177.0°	173°	right		A6000	1 MIN		
ARASA	357.0°	353°	right		A8000	1 MIN		