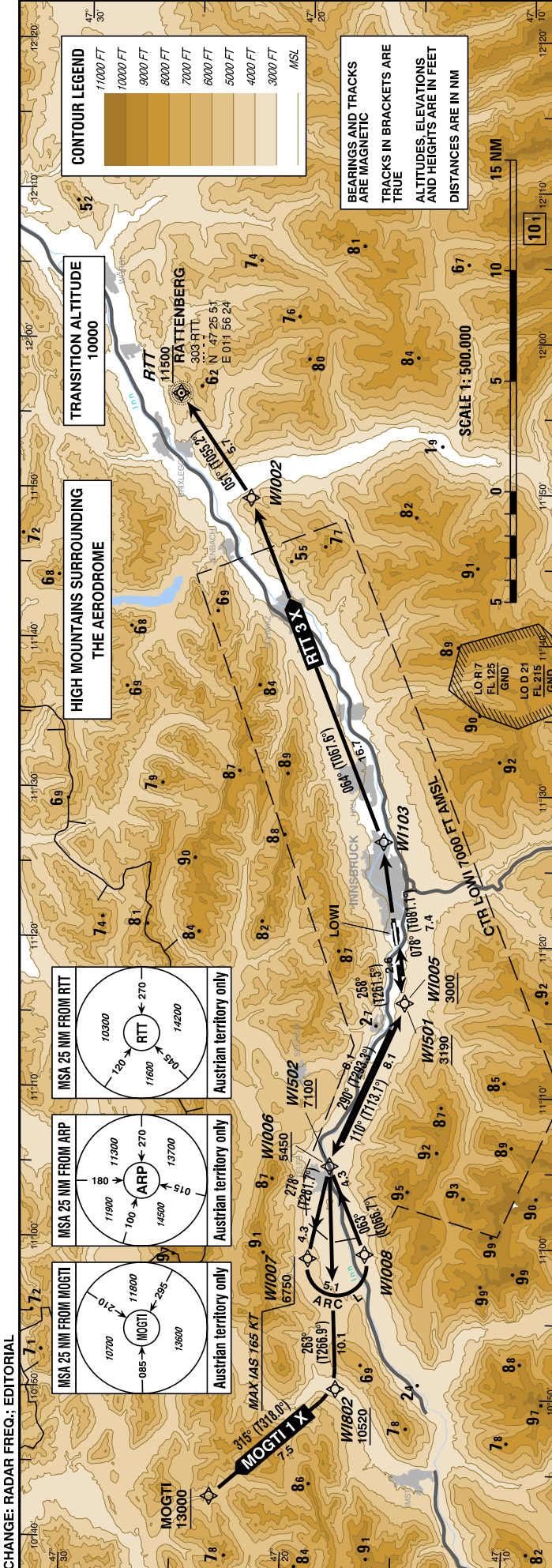


RADAR	128.975
TOWER	120.100
ATIS	126.030



1. Dual GNSS and at least one IRU or equivalent
2. DME/DME, LOC and VOR/DME updating not authorized

**SPECIAL AUTHORIZATION
REQUIRED**

This SID is permissible for special equipped aircraft and requires authorization by Austro Control GmbH
(for detailed information see LOWI AD 2.22, item 3.9.)

SPECIAL AUTHORIZATION REQUIRED - This SID is permissible for special performance aircraft ONLY and requires authorization by Austro Control GmbH (for detailed information see LOWI AD 2.22, item 3.9.).

- Dual GNSS and at least one IRU or equivalent
- DME/DME, LOC and VOR/DME updating not authorized

Designator	Route	After Take-Off		Remarks
		Climb to ..initially	Expect FREQ	
MOGTI 1 X Mogti one x-ray departure	Climb on track 258° to WI501 - WI502 - WI802 - MOGTI	By ATC	INNSBRUCK RADAR 128.975	Climb gradient at least 8,0% (490 FT/NM) until passing 7100 FT MSL, thereafter 5,6% (345 FT/NM).

Contact INNSBRUCK RADAR when advised by Tower

RNAV (RNP) SID Coding Table of MOGTI 1 X

Path Terminator	Waypoint			Course/ Track ° MAG (° True)	DIST NM	Turn Direction	Constraints		RNP Value NM	Remarks
	Identifier	Flyover	Coordinates				Level	Speed		
CF	WI501	no	N471508.72 E0111606.80	258° (261.5°)	2.6		A3190+		0.3	
TF	WI502	no	N471820.40 E0110509.85	290° (293.3°)	8.1	right	A7100+		0.3	
TF	WI802	no	N471746.91 E0105022.55	263° (266.9°)	10.1	left	A10520+		0.3	
TF	MOGTI	no	N472320.33 E0104300.61	315° (318.0°)	7.5	right	A13000+		0.3	

Designator	Route	After Take-Off		Remarks
		Climb to ..initially	Expect FREQ	
RTT 3 X Rattenberg three x-ray departure	Climb on track 258° to WI005 - WI006 - WI007 - WI008 - WI006 - WI005 - WI103 - WI002 - RTT	By ATC	INNSBRUCK RADAR 128.975	Climb gradient at least 7,0% (430 FT/NM) until passing WI005, thereafter 5,0% (305 FT/NM) until passing WI008, thereafter 3,3% (205 FT/NM)

Contact INNSBRUCK RADAR when advised by Tower

RNAV (RNP) SID Coding Table of RTT 3 X

Path Terminator	Waypoint			Course/ Track ° MAG (° True)	DIST NM	Turn Direction	Constraints		RNP Value NM	Remarks
	Identifier	Flyover	Coordinates				Level	Speed		
CF	WI005	no	N471508.72 E0111606.82	258° (261.5°)	2.6		A3000+		0.3	
TF	WI006	no	N471820.40 E0110509.80	290° (293.3°)	8.1	right	A5450+		0.3	
TF	WI007	no	N471912.18 E0105859.94	278° (281.7°)	4.3	left	A6750+	K165-	0.3	
RF	WI008	no	N471638.56 E0105921.62		5.1	left		K165-	0.3	ARC Centre: WI009 N471753.02 E0105834.83 ARC Radius: 1.3 NM
TF	WI006	no	N471820.40 E0110509.80	063° (066.7°)	4.3				0.3	
TF	WI005	no	N471508.72 E0111606.82	110° (113.1°)	8.1	right			0.3	
TF	WI103	no	N471616.49 E0112647.56	078° (081.1°)	7.4	left			0.3	
TF	WI002	no	N472236.01 E0114930.01	064° (067.6°)	16.7	left			0.3	
TF	RTT	no	N472551.32 E0115624.19	051° (055.2°)	5.7	left	A11500+		0.3	