

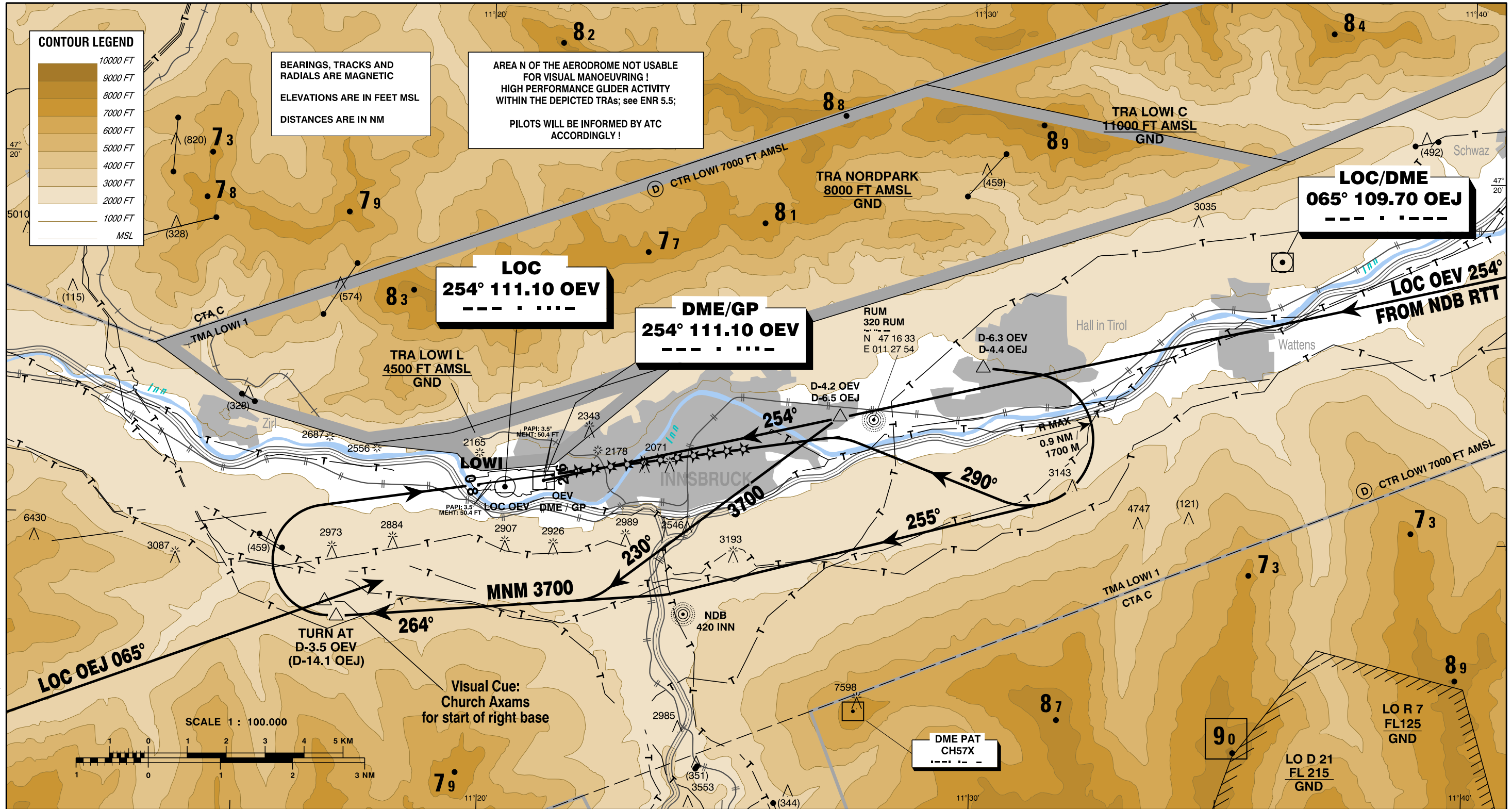
**VISUAL APPROACH CHART - ICAO**

VAR 4° E

AD ELEV 1907 FT

RADAR 128.975  
TOWER 120.100  
ATIS 126.030

**INNSBRUCK**  
ÖSTERREICH AUSTRIA



CHANGE: RADAR FREQ.; EDITORIAL

**OCA**

**MINIMA IN THE AREA OF VISUAL OPERATIONS**

LOC/DME PROCEDURE WEST via ELMEM	LOC/DME PROCEDURE to RWY 26			SPECIAL LOC/DME EAST to RWY 26	RNP Z to RWY 26	RNP E to RWY 26		
	MA-CLIMB GRADIENT					MA-CLIMB GRADIENT		
	2.5 %	3.0 %	4.0 % and 5.0 %			2.5 %	5.0 %	7.1 %
5000	4900	4400	3700	3700	3700	4300	3900	3700

**FLIGHT VISIBILITY:** CAT A AND B 3 KM  
CAT C AND D 5 KM

For calculation of flight profile  
Aerodrome Obstacle Chart - ICAO Type A  
(LOWI AD 2 MAP 4-1) shall be used.