

SPECIAL AUTHORIZATION REQUIRED

This procedure is permissible for special equipped aircraft and requires authorization by Austro Control GmbH

(for detailed information see LOWI AD 2.22, item 3.9.)

MISSED APPROACH:
CLIMB VIA RNAV MISSED APPROACH TRACK TO RTT;
CLIMB TO 11500 FT AMSL AND HOLD.

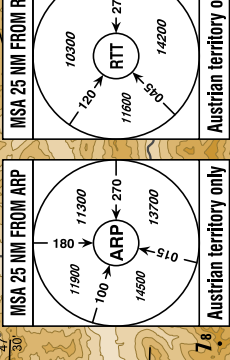
Note: Missed Approach Procedure is based on RNP 0.3

DA (DH) IN FT	A	B	C	D
RNP 0.3	2670	2776		
RNP 0.15	2500	610		

GS (KT)	80	100	120	140	160	180
FT / MIN	490	620	740	860	990	1110

- Dual GNSS and at least one IRU or equivalent
- DME/DME, LOC and VOR/DME updating not authorized
- For uncompensated Baro-VNAV systems, procedure not authorized below AD temp -7°C
- VPA exceeds 3.5° above +1°C

CHANGE: MAX TEMPERATURE: EDITORIAL



Instrument Approach Procedure Coding Table Innsbruck RNP Z RWY 26 (AR)										
Path Terminator	Waypoint				Course/ Track ° MAG (° True)	DIST NM	Turn Direction	ARC Centre Waypoint		ARC Radius NM
	Identifier	Type	Flyover	Coordinates				Identifier	Coordinates	
IF	RTT	IAF	no	N472551.32 E0115624.19						
TF	WI002	FAP	no	N472236.01 E0114930.01	232° (235.3°)	5.7				
TF	WI103		no	N471616.49 E0112647.56	244° (247.9°)	16.7	right			
TF	RW26		yes	N471541.82 E0112125.24	258° (261.1°)	3.7	right			
TF	WI005	MATF	no	N471508.72 E0111606.82	258° (261.3°)	3.7				
TF	WI006	MATF	no	N471820.40 E0110509.80	290° (293.3°)	8.1	right			
TF	WI007	MATF	no	N471912.18 E0105859.94	278° (281.7°)	4.3	left			
RF	WI008		no	N471638.56 E0105921.62		5.1	left	WI009	N471753.02 E0105834.83	1.3
TF	WI006	MATF	no	N471820.40 E0110509.80	063° (066.7°)	4.3				
TF	WI005	MATF	no	N471508.72 E0111606.82	110° (113.1°)	8.1	right			
TF	WI103	MATF	no	N471616.49 E0112647.56	078° (081.1°)	7.4	left			
TF	WI002	MATF	no	N472236.01 E0114930.01	064° (067.6°)	16.7	left			
TF	RTT	MAHF	yes	N472551.32 E0115624.19	052° (055.2°)	5.7	left			
Waypoint	Constraints		RNP Value NM	Navigation Specification	Remarks					
Identifier	Level	Speed								
RTT	A9500+		0.3	RNP AR APCH	MAHF at A11500+					
WI002	A9500+		0.3	RNP AR APCH						
WI103			0.3	RNP AR APCH						
RW26			0.3	RNP AR APCH						
WI005			0.3	RNP AR APCH						
WI006			0.3	RNP AR APCH						
WI007		K165-	0.3	RNP AR APCH						
WI008		K165-	0.3	RNP AR APCH						
RNAV Holding										
Holding Point	Inbound Track ° True	Inbound Track ° MAG	Turn Direction	MAX IAS	Minimum Holding Altitude FT MSL / FL	Time	DIST NM	Remarks		
RTT	228.7°	225°	right		A9500	1 MIN				