

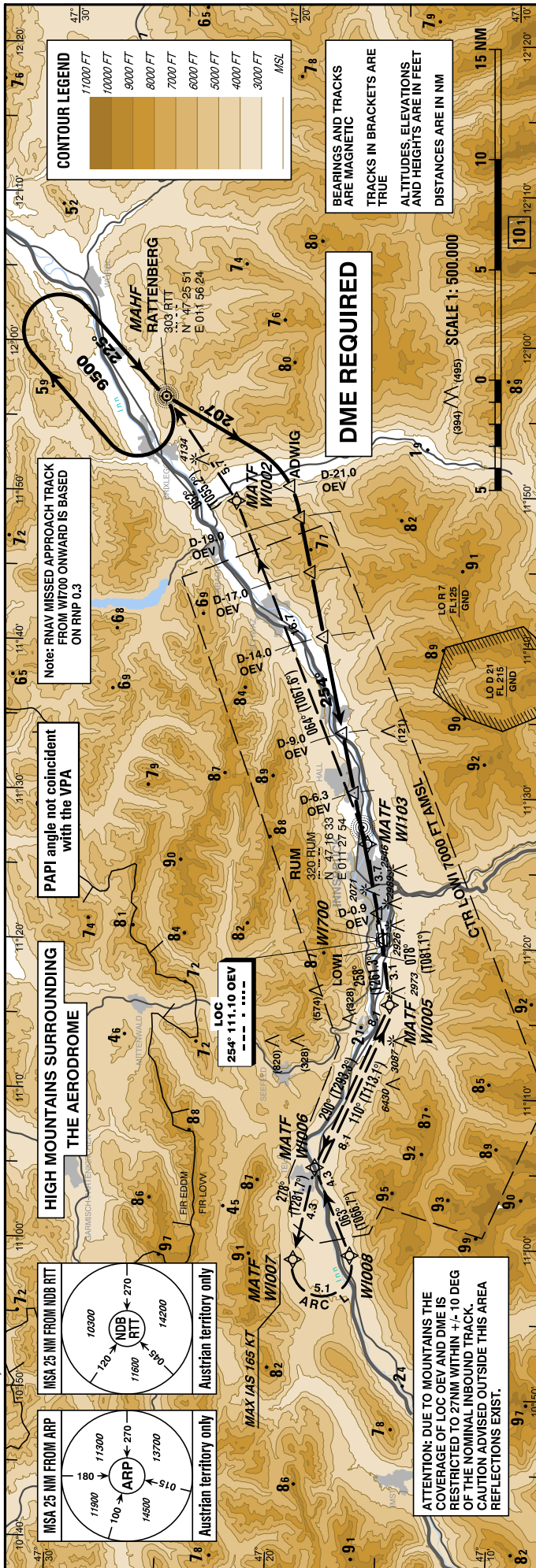
**INSTRUMENT APPROACH CHART - ICAO**

VAR 4° E

AD ELEV 1907 FT  
THR 26 ELEV 1894 FT  
HGT RELATED TO THR ELEV

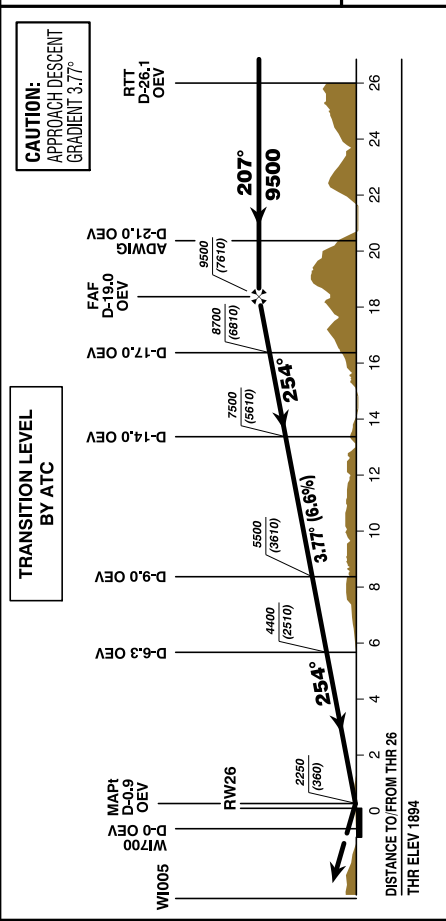
**RADAR TOWER ATIS** 128.975  
120.100  
126.030

(LOC RWY 26 followed by RNAV RNP 0.3 Missed Approach)  
(CAT A / B / C)



**WAYPOINT LIST (WGS84):**

RTT	N472551.32	E0115624.19
W1002	N472236.01	E0114930.01
W1005	N471508.72	E0111606.82
W1006	N471820.40	E0110509.80
W1007	N471912.18	E0105859.94
W1008	N471638.56	E0105921.62
W1009	N471753.02	E0105834.83
(= ARC center point)		
W1103	N471616.49	E0112647.56
W1700	N471530.91	E0112026.63
RW26	N471541.83	E0112125.26
ARP	N471537.00	E0112038.00



**TRANSITION LEVEL BY ATC**

MAP1 D-0.9 OEV	W1005
D-0.9 OEV	W1700
D-3.0 OEV	RW26
D-9.0 OEV	THR ELEV 1894
D-14.0 OEV	
D-17.0 OEV	
D-19.0 OEV	FAF
P-21.0 OEV	ADWIG
D-26.1 OEV	RTT

MA CLIMB GRADIENT until passing 3200 FT, thereafter 2.5%	REQUIRED FLIGHT VISIBILITY IN THE AREA OF VISUAL OPERATIONS			CEILING REQUIRED AT THE MDA		D-19.0 OEV to D-0.9 OEV - DISTANCE 18.1 NM														
	A	B	C	DME OEV	DIST THR	GS (KT)	MIN : SEC													
5.0%	2250 (360)	D-0.9 OEV		18	17	16	15	14	13	12	11	10	9	8	7	6	5	4	3	2
4.0%	2450 (560)	D-0.9 OEV		17.8	16.8	15.8	14.8	13.8	12.8	11.8	10.8	9.8	8.8	7.8	6.8	5.8	4.8	3.8	2.8	1.8
2.5%	2750 (860)	D-0.9 OEV		9100	8700	8300	7900	7500	7100	6700	6300	5900	5500	5100	4700	4300	3900	3500	3100	2700
				(7206)	(6806)	(6406)	(6006)	(5606)	(5206)	(4806)	(4406)	(4006)	(3606)	(3206)	(2806)	(2406)	(2006)	(1606)	(1206)	(806)

**SPECIAL AUTHORIZATION REQUIRED**

This procedure is permissible for special equipped aircraft and requires authorization by Austro Control GmbH for detailed information see LOWI AD 2.22, item 3.7.

**The chart may only be used in connection with the description of the procedure !**

CHANGE: PAPI INFORMATION: EDITORIAL