

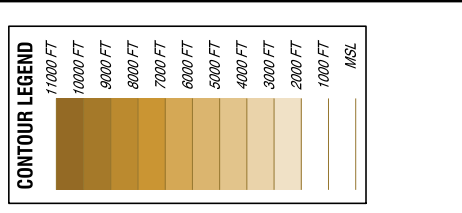
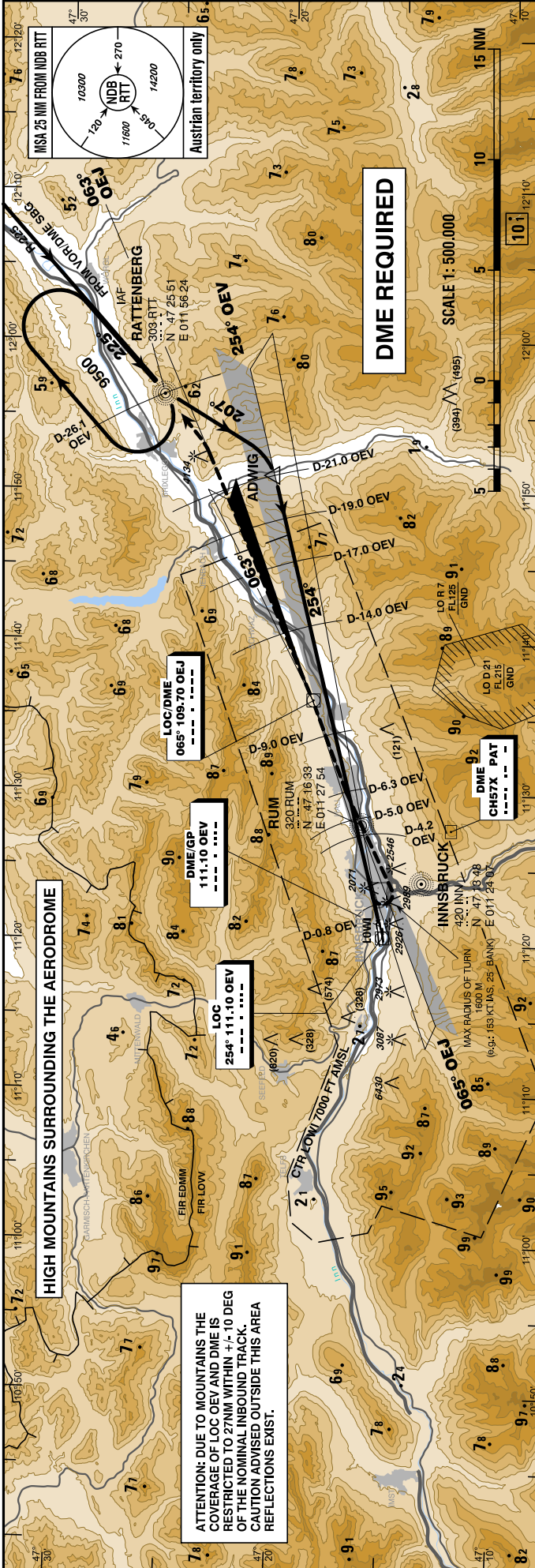
INSTRUMENT  
APPROACH  
CHART - ICAO

VAR 4° E

AD ELEV 1907 FT  
THR 26 ELEV 1894 FT  
HGT RELATED TO THR ELEV

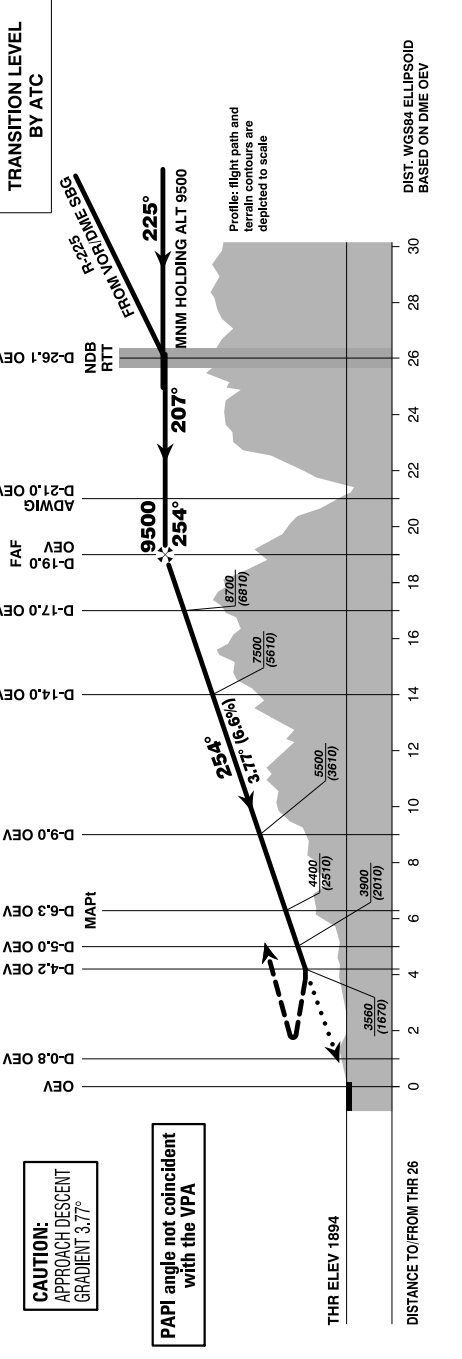
RADAR 128.975  
TOWER 120.100  
ATIS 126.030

**INNSBRUCK**  
ÖSTERREICH AUSTRIA  
SPECIAL LOC/DME PROCEDURE EAST  
(3.77 GP available)



**Missed Approach:**  
Climb on LOC-OEV with MAX GRADIENT.  
At D-0.8 OEJ turn left and follow QDM 060°  
in direction to locator RUM and continue on  
LOC-OEJ (065°/063°) with MAX CLIMB  
GRADIENT to 9500 FT AMSL, turn left to RTT  
and hold.

BEARINGS, TRACKS AND  
RADIALS ARE MAGNETIC  
ALTITUDES, ELEVATIONS  
AND HEIGHTS ARE IN FEET  
DISTANCES ARE IN NM



MDA (MDH) IN FT	MA - CLIMB GRADIENT				REQUIRED FLIGHT VISIBILITY IN THE AREA OF VISUAL OPERATIONS				VISUAL SEGMENT AND CEILING PROCEDURE SEE LOWI AD 2 MAP 14-1												
	INITIAL	FINAL	A	B	C	D	DME OEJ	DIST THR	ALT (HEIGHT)	18	17	16	15	14	13	12	11	10	9	8	
according special permission																					
This procedure is permissible for special equipped aircraft and requires authorization by Austro Control GmbH.																					

CHANGE: PAPI INFORMATION: EDITORIAL