

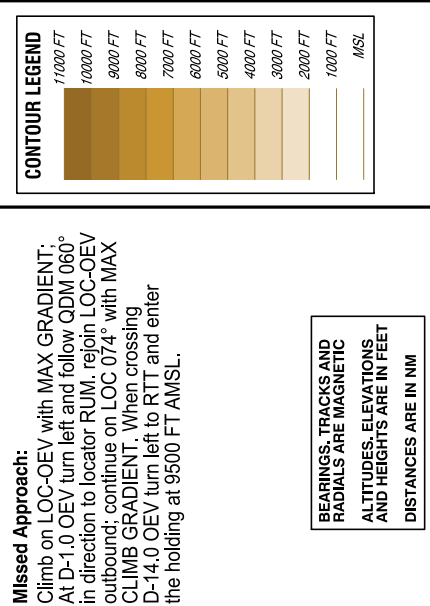
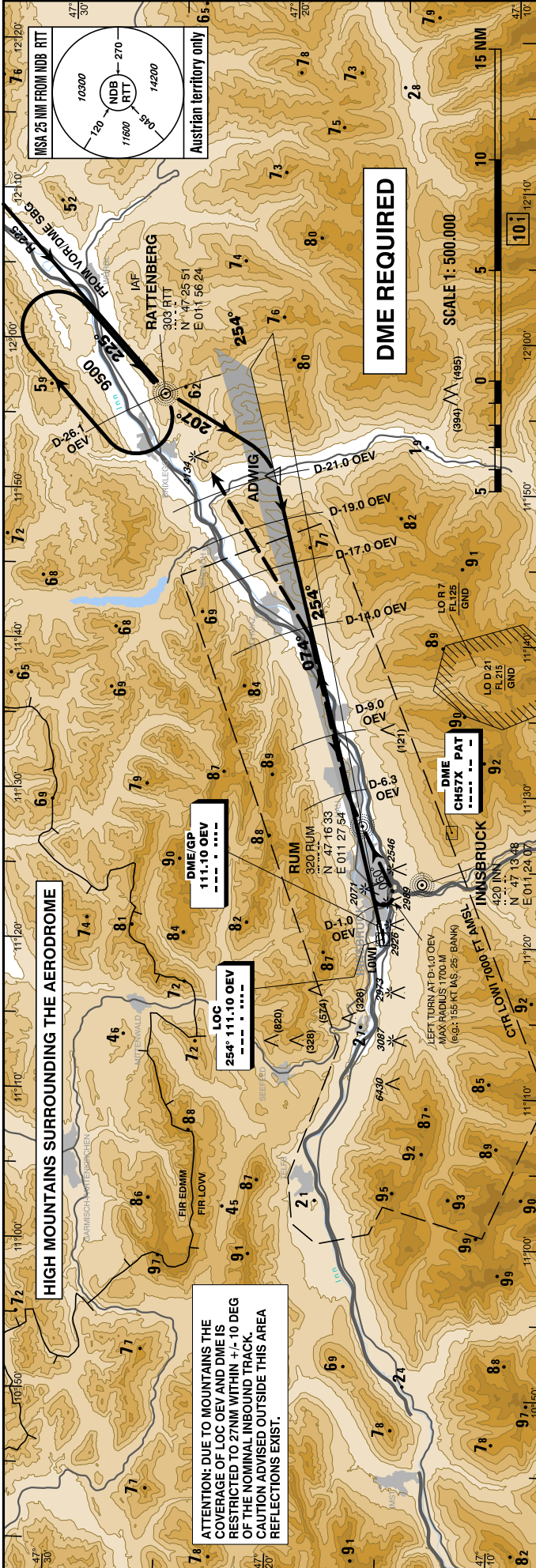
INSTRUMENT
APPROACH
CHART - ICAO

VAR 4° E

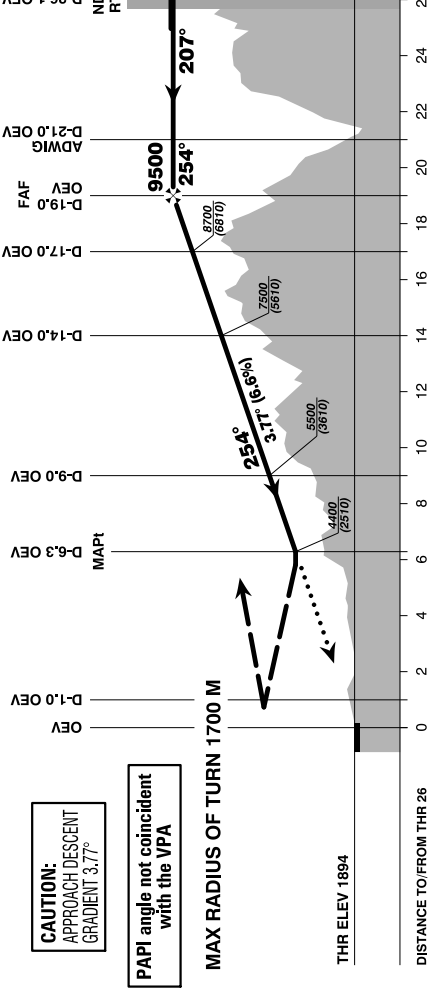
AD ELEV 1907 FT
THR 26 ELEV 1894 FT
HGT RELATED TO THR ELEV

RADAR 128.975
TOWER 120.100
ATIS 126.030

INNSBRUCK
ÖSTERREICH AUSTRIA
LOC/DME PROCEDURE EAST
(3.77° GP available)



Missed Approach:
Climb on LOC-OEV with MAX GRADIENT. At D-1.0 OEV turn left and follow QDM 060° in direction to locator RUM, rejoin LOC-OEV outbound; continue on LOC 074° with MAX CLIMB GRADIENT. When crossing D-14.0 OEV turn left to RTT and enter the holding at 9500 FT AMSL.



MA CLIMB GRADIENT		REQUIRED FLIGHT VISIBILITY IN THE AREA OF VISUAL OPERATIONS				VISUAL SEGMENT AND CEILING PROCEDURE SEE LOWI AD 2 MAP 14-1		D-19.0 OEV to D-6.3 OEV - DISTANCE 12.7 NM														
		A	B	C	D	CEILING REQUIRED AT THE MDA		GS (KT)	80	100	120	140	160	180	MIN : SEC	9:32	7:37	6:21	5:27	4:46	4:14	
MDA (MDH) IN FT	2.5%	4900 (3010)	D-7.5 OEV			DME OEV	18	17	16	15	14	13	12	11	10	9	8					
	3.0%	4400 (2510)	D-6.3 OEV			DIST THR	17.8	16.8	15.8	14.8	13.8	12.8	11.8	10.8	9.8	8.8	7.8					
	4.0%	3700 (1810)	D-4.5 OEV			ALT (HEIGHT)	9100 (7206)	8700 (6806)	8300 (6406)	7900 (6006)	7500 (5606)	7100 (5206)	6700 (4806)	6300 (4406)	5900 (4006)	5500 (3606)	5100 (3206)					
	5.0%	3300 (1410)	D-3.5 OEV																			
		2800 M	3700 M	4500 M																		

The chart may only be used in connection with the description of the procedure !